



Flight Plan & Site Survey

Created using **RPAS Wilco®**

Operation Name:	Moose Jaw Western Development Museum
Pilot Name:	
Pilot Certificate:	
Flight Start:	February 27, 2024 5:35 PM
Flight End:	February 27, 2024 7:35 PM
Flight Area (Latitude):	50° 25' 10.90" N (50.42)
Flight Area (Longitude):	105° 31' 50.00" W (-105.531)
Altitude - Radius:	Alt: 699 ft - Rad: 926.0 m (0.5 nm)
Airspace:	CONTROLLED
FIR - Contact:	CZWG - 204-983-8338

Please ensure you received all required authorizations prior to flight.

Disclaimer

This Site Survey was created using RPAS Wilco by AIM Robotics. The flight plan contained is intended only for RPAS flights on the date/time and location specified. The user accepts all responsibility for the accuracy and completeness of the information contained.

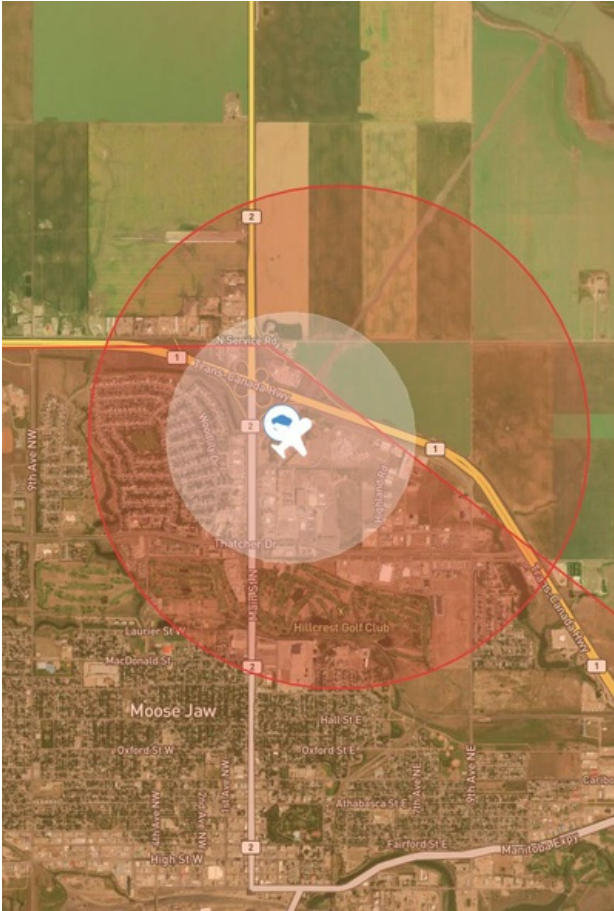
For the complete Terms & Conditions, see

<https://rpswilco.com/#/tnc>



Included

- Site Survey
- Obstacles (if available)
- Nearby Aerodromes
- Canadian Aviation Regulations
- GFA
- Aerodrome Supplements
 - METAR & TAF (if available)
 - NOTAMS
 - CFS

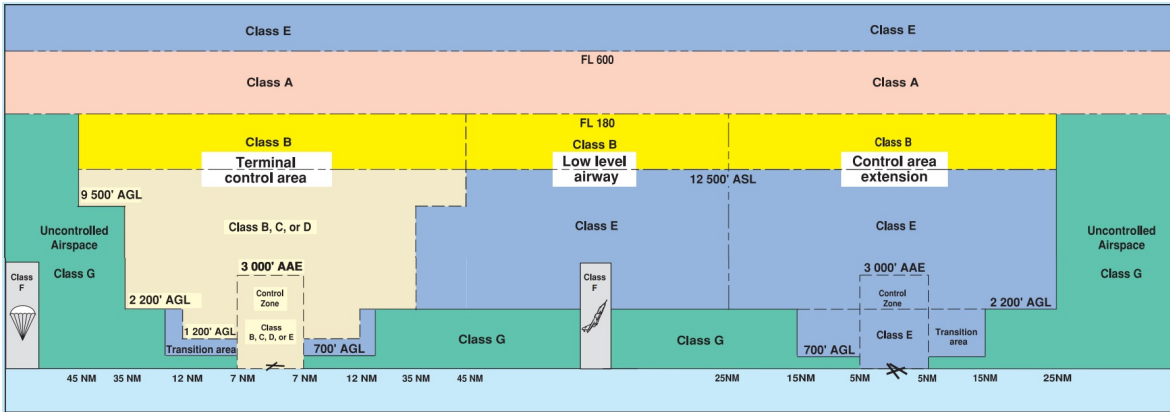
Flight Map



MAP Details

	Latitude	Longitude
 MODEL	50° 25' 10.90" N (50.42)	105° 31' 50.00" W (-105.531)
 Pilot	50° 25' 14.50" N (50.4207)	105° 31' 53.60" W (-105.5316)

Airspace Classification



Overlying Airspaces

Class	Name	Floor	Ceiling
B	Regina, SK CAE XPNDR MANDTRY	12500MSL	18000MSL
E	Moose Jaw, SK TCA	700AGL	12500MSL
B	Moose Jaw, SK TCA	12500MSL	18000MSL
D	Moose Jaw CZ	SFC	8000MSL

Nearest Aerodromes & Distance from Operation

MOOSE JAW (DR. F. H. WIGMORE REGIONAL HOSP) (CWH6 - HELIPORT - Cert)	Lat: 50.42	Long: -105.526	0.325 KM	0.18 NM
AIR VICE MARSHAL C.M. MCEWEN (CYMJ - AERODROME - DND)	Lat: 50.33	Long: -105.559	10.176 KM	5.49 NM
MOOSE JAW MUNICIPALITY (CJS4 - AERODROME - Reg)	Lat: 50.434	Long: -105.386	10.363 KM	5.6 NM

SASKATCHEWAN

AERODROME/FACILITY DIRECTORY

MOOSE JAW (DR. F. H. WIGMORE REGIONAL HOSP) SK (Heli)

CWH6

REF	N50 25 12 W105 31 32 Adj N 10°E (2016) UTC-6 Elev 1879' A5006	
OPR	Dr. F.H. Wigmore Regional Hosp 306-694-0275 Cert PPR	
PF	A-1,2,4 C-3,5,6,7,8	
FLT PLN	FIC Edmonton 866-WXBRIEF (Toll free within Canada) or 866-541-4102 (Toll free within Canada & USA)	
HELI DATA	FATO/TLOF 86' dia CONC Safety Area 115' dia Max heli overall length 57.4'	
RCR	Opr	
LIGHTING	RW (LO) yellow	
COMM	MF Moose Jaw (CYMJ) TWR 126.2 ctc within 10NM 4900 ASL	
PRO	Arr/dep curved 064° to 099° fr heli, slope 16% (H2), day/night use. Arr/dep curved 264° to 279° fr heli, slope 16% (H2), day/night use.	
CAUTION	Lgt poles W, N, E of heli, marked with obst lgts. Hosp S of heli marked with lgts.	

SASKATCHEWAN

AERODROME/FACILITY DIRECTORY

MOOSE JAW / AIR VICE MARSHAL C.M. McEWEN SK

CYMJ

REF	N50 19 49 W105 33 33 4S 9°E (2022) UTC-6 Elev 1892' A5006 LO2 HI3 HI4 CAP	
OPR	DND Aeronautical Information Services 306-694-2222 Ext 5263 CSN 319-826-5263 All non-NFTC / CYMJ based acft PPR 48 hrs rqrd	
PF	B-1 D-2,3,4,5,6 no pax fac avbl. Nova msg rqrd stating ETA, stop-over duration & no of pax	
CUST	15 Wing acft only call 306-780-6223/6218	
FLT PLN		
FIC	Edmonton 866-WXBRIEF (Toll free within Canada) or 866-541-4102 (Toll free within Canada & USA)	
MIL	CSN 319-826-5263	
WX	Met brief for mil only. CSN 826-5260 ltd hrs. O/T JMC 1-800-WXMETEO (996-3836) or CSN 432-2613. (See COMM). METAR dur flt ops. TAF dur flt ops, issue times depending on mil requirements.	
SERVICES	All tran arr & dep 48 hrs PPR thru 15 Wg AIS 306-694-2222 Ext 5263 CSN 319-826-5263. Mil tran svcg ltd 14-0030Z Mon-Fri (fr Nov 1 to Feb 15 1430-01Z Mon-Fri), 48 hrs PN or no svc avbl. All visiting acft rpt to 15 Wg AIS at 4 hg or ctc 694-2222 Ext 5263, upon arr & prior to dep.	
FUEL	F-34, SP, Avbl 14-0030Z Mon-Fri (fr Nov 1 to Feb 15 1430-01Z Mon-Fri) O/T 48 hrs PN.	
OIL	128, 133, 148, SOAP	
ARFF	CAT 3	
SUP FL	LHOX	
JASU	CE13, 15, 16, CEA1	
RWY DATA	Rwy 11L(109°)/29R(289°) 8320x150 ASPH Rwy 11R(109°)/29L(289°) 7280x150 ASPH Rwy 03(034°)/21(214°) 3460x100 ASPH	
RCR	Opr CRFI 14-0030Z Mon-Fri (fr Nov 1 to Feb 15 1430-01Z Mon-Fri) clsd Sat & Sun. Hrs may vary without ntc. Rwy 11R/29L PCN 62 F/D/X/T. Rwy 11L/29R PCN 139 F/D/X/T. Rwy 03/21 light acft only. Depression aprx 700' to 900' from thld 03, 15' rgt of centreline Rwy 03, aprx 4 inches wide and 1.5 inches deep. Twy F max wt 35000lbs. Ramp W of TWR PCN 62 R/A/X/T. Ramp E of TWR PCN 34 R/A/X/T.	
LIGHTING	03-(T ME), 21-(T ME), 11L-AF SF(TE HI) P2 GPI 979' TCH 51', 29R-AF SF(TE HI) P2 GPI 1033' TCH 54', 11R-(TE HI) P2 GPI 1000' TCH 52', 29L-(TE HI) P2 GPI 1000' TCH 52'	
COMM	Avbl 14-0030Z Mon-Fri (fr Nov 1 to Feb 15 1430-01Z Mon-Fri), A/D frequently clsd Sat & Sun. Opr dates & hrs may vary without notice.	
ATIS	131.3 257.8	
CLNC DEL	135.3 234.4	
GND	121.8 275.8	
TWR	126.2 295.6 310.8 322.6 (E)	
TML	119.0 227.6 342.9 (E)	
ARR	119.0 129.1 134.1x 227.6 289.4x 308.3x 318.8x 374.1x 378.5x 381.3x (E)	
DEP	119.0 227.6 342.9 (E)	
PMSV	344.6 ltd hrs.	

SASKATCHEWAN

AERODROME/FACILITY DIRECTORY

MOOSE JAW / AIR VICE MARSHAL C.M. McEWEN SK (Cont'd)

CYMJ

<p>NAV</p> <p>VORTAC</p> <p>DME</p> <p>ILS</p> <p>PAR</p>	<p>YMJ 113.4 Ch 81 N50 19 52 W105 33 48 (1898') VOR maint 2nd Mon of the month 13-14Z. TACAN maint 3rd Thu of the month 13-15Z.</p> <p>IBP or IMJ 109.3 Ch 30 N50 19 51 W105 33 48 Maint 2nd Mon of the month 12-14Z</p> <p>IMJ 109.3 (Rwy 29R) RVR or IBP 109.3 (Rwy 11L) Maint 2nd Mon of the month 12-14Z</p> <p>119.0 227.6 (E) 14-0030Z Mon-Fri (fr Nov 1 to Feb 15 1430-01Z Mon-Fri) clsd Sat & Sun. Hrs may vary without notice. PAR maint 1st Tue of the month 13-16Z. PSR/SSR maint 1st Fri of the month 12-14Z</p>
<p>PRO</p> <p>HELI</p> <p>NOISE</p>	<p>A/D clsd to unauthorized acft outside of twr opr hrs 14-0030Z Mon-Fri (fr Nov 1 to Feb 15 1430-01Z Mon-Fri). Acft unable to establish two-way comm with CYMJ ATC are proh fr taxi, tkof or ldg at the A/D exc in an emerg. All RCAF acft requesting enroute apch during twr ops hrs do not require PPR. Apch req appr at the discretion of CYMJ ATS subj to tfc density. All tran acft must ctc CYMJ gnd on 121.8/275.8 prior to engine start. On climb out in VFR wx, all acft to not exceed 2500 ASL until beyond dep end of rwy. Rgt hand circuits Rwy 11R and 29R (CAR 602.96). Tfc Ptn - Convl 3000 ASL, Jet 3500 MSL. CZ may be active outside published hrs. Glider activity wknds & hols within 3 NM of AD max alt 10,000 ASL Paradrop activity to 12,000 ASL within 1.5NM of Moose Jaw Muni.</p> <p>Civilian training areas: See MOOSE JAW / AIR VICE MARSHAL C.M. McEWEN VFR TERMINAL PROCEDURES CHART.</p> <p>Dep & arr Helo 1 & 2 see VTPC. Arriving acft must ctc twr 295.6 or 126.2 prior to entering CZ & req Helo 1 or Helo 2 arr. Intercept inbound track within 10NM. Heli parking positions as directed by ATC (normally west side of control tower).</p> <p>All mil acft shall avoid flying over the city of Moose Jaw below 5000 ft ASL.</p>
<p>CAUTION</p>	<p>Rwy 21 - PSR twr 2010 ASL loc 2034' along & 767' rgt of dep end centreline. Twy Bravo between Rwy 11L & Rwy 11R is restricted to locally based Harvard, Hawks & Tutor acft only. RPAS, 3.5NM NW of aerodrome YMJ R333 3.5 DME posn (N50 23 18 W105 35 12) max alt 400 AGL.</p>

SASKATCHEWAN

AERODROME/FACILITY DIRECTORY

MOOSE JAW MUNI SK

CJS4

REF	N50 26 01 W105 23 10 7ENE 10°E (2013) UTC-6 Elev 1904' A5006 LO2 CAP	
OPR	Provincial Airways 306-692-7335 (After hrs 306-630-8870) Reg	
PF	D-2,3,4,5,6	
FLT PLN FIC	Edmonton 866-WXBRIEF (Toll free within Canada) or 866-541-4102 (Toll free within Canada & USA)	
SERVICES FUEL OIL	100LL, JA-1 (FSII Avbl) Self-serve All	
RWY DATA RCR	Rwy 13(125°)/31(305°) 4000x75 ASPH Opr	
LIGHTING	13-(TE LO), 31-(TE LO) ARCAL-122.8 type J	
COMM ATF	UNICOM ltd hrs O/T tfc 122.8 5NM 4900 ASL excluding the CYMJ Class "D" CZ. Aprt in close proximity to CFB Moose Jaw Class "D" CZ, for flt info ctc TWR 126.2	
PRO	Rgt hand circuits Rwy 31 (CAR 602.96). Civilian training areas: See MOOSE JAW / AIR VICE MARSHAL C.M. McEWEN VFR TERMINAL PROCEDURES CHART	
CAUTION	Ocsl parajump activity within 2NM of A/D daylight hours Apr 1-Nov 15, activated by NOTAM, max alt 12,500 ASL. P-line 2046 ASL 0.4NM SE Thld 31.	