



# Flight Plan & Site Survey

Created using **RPAS Wilco**<sup>®</sup>

Operation Name:	EKRCF Rampart
Pilot Name:	██████████
Pilot Certificate:	██████████
Flight Start:	June 22, 2023 11:54 AM
Flight End:	June 22, 2023 1:54 PM
Flight Area (Latitude):	49° 32' 28.30" N ( 49.541 )
Flight Area (Longitude):	115° 38' 35.80" W ( -115.643 )
Altitude - Radius:	Alt: 600 ft - Rad: 926.0 m ( 0.5 nm)
Airspace:	UNCONTROLLED
FIR - Contact:	CZVR - 604-586-4500

Please ensure you received all required authorizations prior to flight.

## Disclaimer

This Site Survey was created using RPAS Wilco by AIM Robotics. The flight plan contained is intended only for RPAS flights on the date/time and location specified. The user accepts all responsibility for the accuracy and completeness of the information contained.

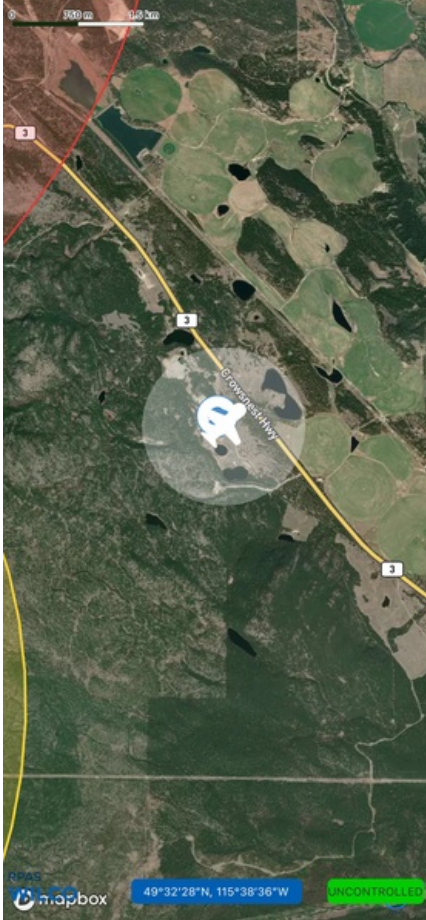
For the complete Terms & Conditions, see

<https://rpswilco.com/#/tnc>



## Included

- Site Survey
- Obstacles (if available)
- Nearby Aerodromes
- Canadian Aviation Regulations
- GFA
- Aerodrome Supplements
  - METAR & TAF (if available)
  - NOTAMS
  - CFS

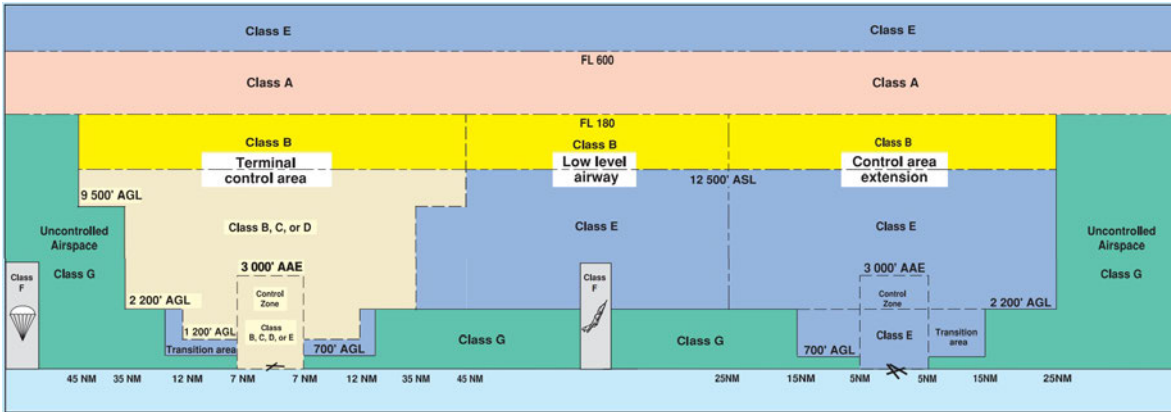
## Flight Map



## MAP Details

	Latitude	Longitude
 MODEL	49° 32' 28.30" N ( 49.541 )	115° 38' 35.80" W ( -115.643 )
 Pilot	49° 32' 31.90" N ( 49.5422 )	115° 38' 39.40" W ( -115.6443 )

## Airspace Classification



## Overlying Airspaces

Class	Name	Floor	Ceiling
E	V300 Airway MEA: 12500MSL	2200AGL	12500MSL
B	V300 Airway MEA: 12500MSL	12500MSL	18000MSL
B	Cranbrook, BC TA	12500MSL	18000MSL
E	Cranbrook, BC TA	700AGL	12500MSL
E	Cranbrook, BC CAE	2200AGL	12500MSL
B	Cranbrook, BC CAE	12500MSL	18000MSL
E	T646 Airway	2200AGL	12500MSL
B	T646 Airway	12500MSL	18000MSL
B	T707 Airway	12500MSL	18000MSL
E	T707 Airway	2200AGL	12500MSL
E	Williams Lake, BC CAE	12500MSL	12500MSL
B	Williams Lake, BC CAE	12500MSL	18000MSL

## Nearest Aerodromes & Distance from Operation

CRANBROOK (EAST KOOTENAY REGIONAL HOSP) (CAE2 HELIPORT Cert)	Lat: 49.511	Long: 115.758	4.403 KM	4.54 NM
CANADIAN ROCKIES INTL (CYXC AERODROME Cert)	Lat: 49.612	Long: 115.782	12.729 KM	6.87 NM
LIONEL P. DEMERS MEMORIAL AIRPARK (CBE2 AERODROME Reg)	Lat: 49.283	Long: 115.15	45.801 KM	24.73 NM
FERNIE (ELK VALLEY HOSPITAL) (CBP3 HELIPORT Cert)	Lat: 49.513	Long: 115.056	42.503 KM	22.95 NM

# Canadian Aviation Regulations

## Division III — General Operating and Flight Rules

For full listing please visit <https://laws-lois.justice.gc.ca/eng/regulations/SOR-96-433/FullText.html#s-901.27>

### Visual Line-of-sight

- **901.11 (1)** Subject to subsection (2) no pilot shall operate a remotely piloted aircraft system unless the pilot or a visual observer has the aircraft in visual line-of-sight at all times during flight.
- **(2)** A pilot may operate a remotely piloted aircraft system without the pilot or a visual observer having the aircraft in visual line-of-sight if the operation is conducted in accordance with a special flight operations certificate — RPAS issued under section 903.03.

### Procedures

- **901.23 (1)** No pilot shall operate a remotely piloted aircraft system unless the following procedures are established:
  - **(a)** normal operating procedures, including pre-flight, take-off, launch, approach, landing and recovery procedures; and
  - **(b)** emergency procedures, including with respect to
    - **(i)** a control station failure,
    - **(ii)** an equipment failure,
    - **(iii)** a failure of the remotely piloted aircraft,
    - **(iv)** a loss of the command and control link,
    - **(v)** a fly-away, and
    - **(vi)** flight termination.
- **(2)** If the manufacturer of the remotely piloted aircraft system provides instructions with respect to the topics referred to in paragraphs (1)(a) and (b), the procedures established under subsection (1) shall reflect those instructions.
- **(3)** No pilot shall conduct the take-off or launch of a remotely piloted aircraft unless the procedures referred to in subsection (1) are reviewed before the flight by, and are immediately available to, each crew member.
- **(4)** No pilot shall operate a remotely piloted aircraft system unless the operation is conducted in accordance with the procedures referred to in subsection (1).

### Site Survey

**901.27** No pilot shall operate a remotely piloted aircraft system unless, before commencing operations, they determine that the site for take-off, launch, landing or recovery is suitable for the proposed operation by conducting a site survey that takes into account the following factors:

- **(a)** the boundaries of the area of operation;
- **(b)** the type of airspace and the applicable regulatory requirements;
- **(c)** the altitudes and routes to be used on the approach to and departure from the area of operation;
- **(d)** the proximity of manned aircraft operations;
- **(e)** the proximity of aerodromes, airports and heliports;
- **(f)** the location and height of obstacles, including wires, masts, buildings, cell phone towers and wind turbines;
- **(g)** the predominant weather and environmental conditions for the area of operation; and
- **(h)** the horizontal distances from persons not involved in the operation.

### Operations at or in the Vicinity of an Aerodrome, Airport or Heliport

- **901.47 (1)** No pilot shall operate a remotely piloted aircraft at or near an aerodrome that is listed in the *Canada Flight Supplement* or the *Water Aerodrome Supplement* in a manner that could interfere with an aircraft operating in the established traffic pattern.
- **(2)** Subject to section 901.73 no pilot shall operate a remotely piloted aircraft at a distance of less than
  - **(a)** three nautical miles from the centre of an airport; and
  - **(b)** one nautical mile from the centre of a heliport.
- **(3)** No pilot shall operate a remotely piloted aircraft at a distance of less than three nautical miles from the centre of an aerodrome operated under the authority of the Minister of National Defence unless the operation is conducted in accordance with a special flight operations certificate — RPAS issued under section 903.03.

### Records

- **901.48 (1)** Every owner of a remotely piloted aircraft system shall keep the following records:
  - **(a)** a record containing the names of the pilots and other crew members who are involved in each flight and, in respect of the system, the time of each flight or series of flights and
  - **(b)** a record containing the particulars of any mandatory action and any other maintenance action, modification or repair performed on the system, including
    - **(i)** the names of the persons who performed them,
    - **(ii)** the dates they were undertaken,
    - **(iii)** in the case of a modification, the manufacturer, model and a description of the part or equipment installed to modify the system, and
    - **(iv)** if applicable any instructions provided to complete the work.
- **(2)** Every owner of a remotely piloted aircraft system shall ensure that the records referred to in subsection (1) are made available to the Minister on request and are retained for a period of
  - **(a)** in the case of the records referred to in paragraph (1)(a), 12 months after the day on which they are created; and
  - **(b)** in the case of the records referred to in paragraph (1)(b), 24 months after the day on which they are created.
- **(3)** Every owner of a remotely piloted aircraft system who transfers ownership of the system to another person shall, at the time of transfer, also deliver to that person all of the records referred to in paragraph (1)(b).

## CRANBROOK (EAST KOOTENAY REGIONAL HOSP) BC (Heli)

CAE2



<b>REF</b>	N49 30 42 W115 44 59 15°E (2012) UTC-7(6) Elev 3061' A5005
<b>OPR</b>	Interior Health Authority 250-426-5281 Cert NVG Compliant PPR
<b>PF</b>	B-1,2,4 C-3,5,6
<b>FLT PLN</b>	
<b>FIC</b>	Kamloops 866-WXBRIEF (Toll free within Canada) or 866-541-4101 (Toll free within Canada & USA)
<b>HELI DATA</b>	FATO/TLOF 86' dia CONC Safety Area 115' dia Max heli overall length 57.4' (CAR 602.96)
<b>RCR</b>	Opr
<b>COMM</b>	COMM blind spots all quads
<b>ATF</b>	tfc 122.3 3NM 6100 ASL excluding Cranbrook CZ.
<b>PRO</b>	Arr/dep 358° fr heli, slope 16% (H1) day use only. Arr/dep 170° fr heli, slope 18% (H1) day use only. Arr/dep curved 253° to 281°, slope 12% (H2) day use only (CAR 602.96). NVG reqd for night use, all flt paths (CAR 602.96) 20 min PPR OPR. Advs Cranbrook rdo prior to arr/dep.
<b>CAUTION</b>	Numerous prkg lot lgt standards adj all quads. Trees to 150 AGL, 350' W of heli, both sides of H2 flt path.

## BRITISH COLUMBIA

## AERODROME/FACILITY DIRECTORY

## CRANBROOK / CANADIAN ROCKIES INTL BC

CYXC

<b>REF</b>	N49 36 44 W115 46 55 5N 15°E (2014) UTC-7(6) Elev 3084' A5005 LO2 HI3 CAP	
<b>OPR</b>	City 250-426-7913 Cert	
<b>PF</b>	A-1,2,6 C-5 D-3,4	
<b>CUST</b>	AOE/15 888-226-7277 15-23Z†	
<b>FLT PLN</b>	<p><b>FIG</b> Kamloops 866-WXBRIEF (Toll free within Canada) or 866-541-4101 (Toll free within Canada &amp; USA)</p> <p><b>WX</b> METAR H24. TAF H24, issue times: 01, 07, 13, 19Z.</p>	
<b>SERVICES</b>	After hrs call out chg may be levied for one or more svcs.	
<b>FUEL</b>	100LL, JA-1 (FSII avbl), SP, HPR	
<b>OIL</b>	65, 80, 100, Turbo 274, Multigrade	
<b>S</b>	1(ltd), 2,4,5,6	
<b>SUP FL</b>	D and A-Ice 1400-0200Z† O/T PPR 250-489-1515	
<b>JASU</b>	10/15	
<b>PVT ADV</b>	Norm Dakin Enterprises 250-489-1515; Streamline Airways 250-420-7690; Bid Air 250-426-8888	
<b>RWY DATA</b>	Rwy 16(164°)/34(344°) 8000x150 asphalt Thld 16 displ 780' Rwy 16 down 0.7% first 760' then up 0.8% last 7240'	
<b>RWY CERT</b>	Rwy 16 RVR 1200(1/4sm)/Rwy 34 RVR 1200(1/4sm) AGN IIIB	
<b>APRON</b>	Tran prkg on S side of main apron. N side of main apron rstd to sked t/c only. Itinerant pilot/pax access via gate adj to FSS bldg. No access/egress via tml bldg facility without prior appr from aprt opr.	
<b>RCR</b>	Opr Win maint 1630-2300Z† O/T 2 hr PN cost recovery for non-sked acct. CRFI, PLR/PCN	
<b>LIGHTING</b>	16-AN(TE HI) P3, 34-AO(TE HI) P2 PAPI limitation/restriction. PAPI Rwy 34 to be used only within 3NM of thld - O/R thru FSS	
<b>COMM</b>	Comm blind spots all quads	
<b>RADIO</b>	122.3 262.7 PTC avbl (E) (emerg only 250-426-6312)	
<b>RCO</b>	Pacific rdo 123.275 (FISE) 126.7 (bcst)	
<b>MF</b>	rdo 122.3 5NM 6100 ASL (CAR 602.98)	
<b>PAL</b>	Vancouver Ctr 133.6	
<b>NAV</b>		
<b>NDB</b>	XC 242 (M) N49 40 57 W115 46 59 SKOOKUM SX 368 (M) N49 57 18 W115 47 32	
<b>VOR/DME</b>	YXC 112.1 Ch 58 N49 33 15 W116 05 18 (7558')	
<b>DME</b>	IXC 110.3 Ch 40 N49 37 06 W115 46 51 (3053')	
<b>ILS</b>	IXC 110.3 (Rwy 16) LOC reliable only within 10° either side of centreline.	
<b>PRO</b>	Rgt hand circuits Rwy 34 (CAR 602.96), left hand circuits Rwy 16. Glider activity left hand circuits Rwy 34, rgt hand circuits Rwy 16 (CAR 602.96).	
<b>CAUTION</b>	Numerous trees to 75 AGL E side of the apch to Rwy 16 & to within 450' either side of rwy. Hi terrain reduces operational length of Rwy 34 PAPI	

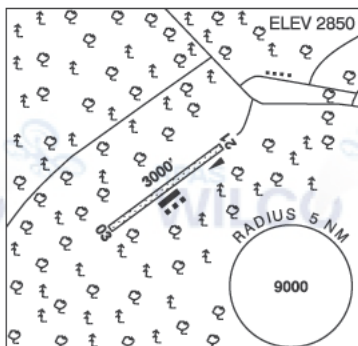
## BRITISH COLUMBIA

## AERODROME/FACILITY DIRECTORY

## ELKO / LIONEL P. DEMERS MEMORIAL AIRPARK BC

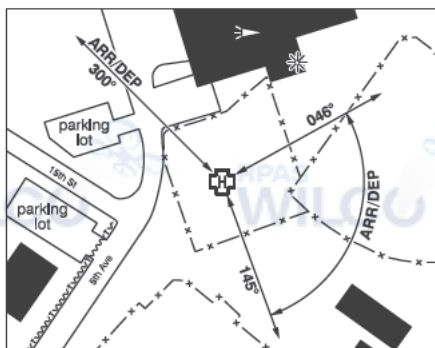
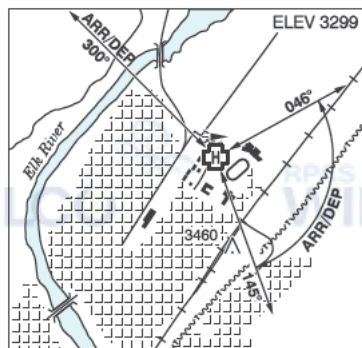
CBE2

<b>REF</b>	N49 17 W115 09 1.7WSW 15°E (2012) UTC-7(6) Elev 2850' A5005
<b>OPR</b>	Richard Demore Crowsnest Owners & Pilots Society 519-420-0745 Reg
<b>PF</b>	C-1,2 D-4,5
<b>FLT PLN</b>	
<b>FIC</b>	Kamloops 866-WXBRIEF (Toll free within Canada) or 866-541-4101 (Toll free within Canada & USA)
<b>RWY DATA</b>	Rwy 03/21 3000x100 GRASS
<b>RCR</b>	Opr No win maint
<b>COMM</b>	
<b>ATF</b>	ffc 123.2 5NM 5900 ASL
<b>CAUTION</b>	Wildlife in vicinity of rwy. Soft field conds in Mar & Apr.



## FERNIE (ELK VALLEY HOSP) BC (Heli)

CBP3



<b>REF</b>	N49 30 46 W115 03 22 15°E (2013) UTC-7(6) Elev 3299' A5005
<b>OPR</b>	Interior Health Region 250-423-4453 Cert NVIS OPS AUTH PPR
<b>PF</b>	A-1 C-2,3,4,5,6
<b>FLT PLN</b>	
<b>FIC</b>	Kamloops 866-WXBRIEF (Toll free within Canada) or 866-541-4101 (Toll free within Canada & USA)
<b>HELI DATA</b>	FATO/TLOF 86' dia CONC/ASPH Safety Area 115' dia Max heli overall length 57.4' (CAR 602.96)
<b>RCR</b>	Opr
<b>COMM</b>	
<b>RCO</b>	Pacific rdo 123.375 (FISE)
<b>ATF</b>	tfc 123.2 5NM 5300 ASL
<b>PRO</b>	Arr/dep 046° to 145° fr heli, (H1) (CAR 602.96). Arr/dep 300° fr heli, (H1) (CAR 602.96). NVIS reqrd for night use, all flt paths (CAR 602.96).
<b>CAUTION</b>	Rising terrain E of railway. Lgtd twr aprx 1500' S of heli 3460 ASL. Unlgtd p-lines adj E and aprx 370' NW of heli.