



Flight Plan & Site Survey

Created using **RPAS Wilco**®

Operation Name:	Club air calm
Pilot Name:	██████████
Pilot Certificate:	██████████
Flight Start:	March 22, 2023 12:47 PM
Flight End:	March 22, 2023 2:47 PM
Flight Area (Latitude):	45° 37' 49.40" N (45.63)
Flight Area (Longitude):	74° 22' 29.40" W (-74.375)
Altitude - Radius:	Alt: 700 ft - Rad: 926.0 m (0.5 nm)
Airspace:	UNCONTROLLED
FIR - Contact:	CZUL - 506-867-7173

Please ensure you received all required authorizations prior to flight.

Disclaimer

This Site Survey was created using RPAS Wilco by AIM Robotics. The flight plan contained is intended only for RPAS flights on the date/time and location specified. The user accepts all responsibility for the accuracy and completeness of the information contained.

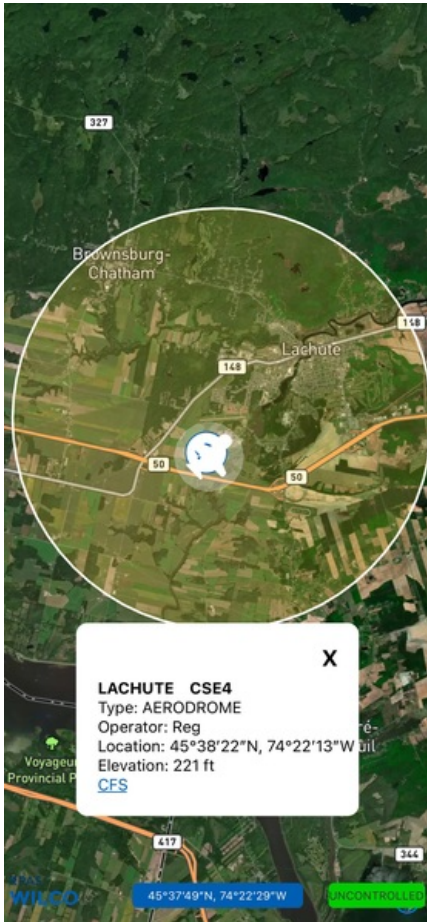
For the complete Terms & Conditions, see

<https://rpswilco.com/#/tnc>



Included

- Site Survey
- Obstacles (if available)
- Nearby Aerodromes
- Canadian Aviation Regulations
- GFA
- Aerodrome Supplements
 - METAR & TAF (if available)
 - NOTAMS
 - CFS

Flight Map



MAP Details

	Latitude	Longitude
 MODEL	45° 37' 49.40" N (45.63)	74° 22' 29.40" W (-74.375)
 Pilot	45° 37' 53.00" N (45.6314)	74° 22' 33.00" W (-74.3758)

Airspace Classification



Overlying Airspaces

Class	Name	Floor	Ceiling
E	Montreal FIR CAE	6000MSL	12500MSL
B	Montreal FIR CAE	12500MSL	18000MSL
E	Montreal FIR CAE	2000MSL	12500MSL
B	Montreal FIR CAE	12500MSL	18000MSL
E	T781 Airway	2200AGL	12500MSL
B	T781 Airway	12500MSL	18000MSL
C	Montral, QC TCA XPNDR MANDTRY	3000MSL	5000MSL
C	Montral, QC TCA XPNDR MANDTRY	5000MSL	12500MSL
E	T614 Airway	2200AGL	12500MSL
B	T614 Airway	12500MSL	18000MSL
E	T616 Airway	2200AGL	12500MSL
B	T616 Airway	12500MSL	18000MSL
E	T636 Airway	2200AGL	12500MSL
B	T636 Airway	12500MSL	18000MSL
E	T649 Airway	2200AGL	12500MSL
B	T649 Airway	12500MSL	18000MSL

Nearest Aerodromes & Distance from Operation

LACHUTE (CSE4 AERODROME Reg)	Lat: 45.639	Long: 74.37	1.029 KM	0.56 NM
HAWKESBURY (EAST) (CPG5 AERODROME Reg)	Lat: 45.583	Long: 74.549	14.537 KM	7.85 NM
HAWKESBURY (CNV4 AERODROME Reg)	Lat: 45.617	Long: 74.65	21.45 KM	11.58 NM
MONTREAL INTL (MIRABEL) (CYMX AERODROME Cert)	Lat: 45.68	Long: 74.039	26.678 KM	14.4 NM

Canadian Aviation Regulations

Division III — General Operating and Flight Rules

For full listing please visit <https://laws-lois.justice.gc.ca/eng/regulations/SOR-96-433/FullText.html#s-901.27>

Visual Line-of-sight

- **901.11 (1)** Subject to subsection (2) no pilot shall operate a remotely piloted aircraft system unless the pilot or a visual observer has the aircraft in visual line-of-sight at all times during flight.
- **(2)** A pilot may operate a remotely piloted aircraft system without the pilot or a visual observer having the aircraft in visual line-of-sight if the operation is conducted in accordance with a special flight operations certificate — RPAS issued under section 903.03.

Procedures

- **901.23 (1)** No pilot shall operate a remotely piloted aircraft system unless the following procedures are established:
 - **(a)** normal operating procedures, including pre-flight, take-off, launch, approach, landing and recovery procedures; and
 - **(b)** emergency procedures, including with respect to
 - **(i)** a control station failure,
 - **(ii)** an equipment failure,
 - **(iii)** a failure of the remotely piloted aircraft,
 - **(iv)** a loss of the command and control link,
 - **(v)** a fly-away, and
 - **(vi)** flight termination.
- **(2)** If the manufacturer of the remotely piloted aircraft system provides instructions with respect to the topics referred to in paragraphs (1)(a) and (b), the procedures established under subsection (1) shall reflect those instructions.
- **(3)** No pilot shall conduct the take-off or launch of a remotely piloted aircraft unless the procedures referred to in subsection (1) are reviewed before the flight by, and are immediately available to, each crew member.
- **(4)** No pilot shall operate a remotely piloted aircraft system unless the operation is conducted in accordance with the procedures referred to in subsection (1).

Site Survey

901.27 No pilot shall operate a remotely piloted aircraft system unless, before commencing operations, they determine that the site for take-off, launch, landing or recovery is suitable for the proposed operation by conducting a site survey that takes into account the following factors:

- **(a)** the boundaries of the area of operation;
- **(b)** the type of airspace and the applicable regulatory requirements;
- **(c)** the altitudes and routes to be used on the approach to and departure from the area of operation;
- **(d)** the proximity of manned aircraft operations;
- **(e)** the proximity of aerodromes, airports and heliports;
- **(f)** the location and height of obstacles, including wires, masts, buildings, cell phone towers and wind turbines;
- **(g)** the predominant weather and environmental conditions for the area of operation; and
- **(h)** the horizontal distances from persons not involved in the operation.

Operations at or in the Vicinity of an Aerodrome, Airport or Heliport

- **901.47 (1)** No pilot shall operate a remotely piloted aircraft at or near an aerodrome that is listed in the *Canada Flight Supplement* or the *Water Aerodrome Supplement* in a manner that could interfere with an aircraft operating in the established traffic pattern.
- **(2)** Subject to section 901.73 no pilot shall operate a remotely piloted aircraft at a distance of less than
 - **(a)** three nautical miles from the centre of an airport; and
 - **(b)** one nautical mile from the centre of a heliport.
- **(3)** No pilot shall operate a remotely piloted aircraft at a distance of less than three nautical miles from the centre of an aerodrome operated under the authority of the Minister of National Defence unless the operation is conducted in accordance with a special flight operations certificate — RPAS issued under section 903.03.

Records

- **901.48 (1)** Every owner of a remotely piloted aircraft system shall keep the following records:
 - **(a)** a record containing the names of the pilots and other crew members who are involved in each flight and, in respect of the system, the time of each flight or series of flights and
 - **(b)** a record containing the particulars of any mandatory action and any other maintenance action, modification or repair performed on the system, including
 - **(i)** the names of the persons who performed them,
 - **(ii)** the dates they were undertaken,
 - **(iii)** in the case of a modification, the manufacturer, model and a description of the part or equipment installed to modify the system, and
 - **(iv)** if applicable any instructions provided to complete the work.
- **(2)** Every owner of a remotely piloted aircraft system shall ensure that the records referred to in subsection (1) are made available to the Minister on request and are retained for a period of
 - **(a)** in the case of the records referred to in paragraph (1)(a), 12 months after the day on which they are created; and
 - **(b)** in the case of the records referred to in paragraph (1)(b), 24 months after the day on which they are created.
- **(3)** Every owner of a remotely piloted aircraft system who transfers ownership of the system to another person shall, at the time of transfer, also deliver to that person all of the records referred to in paragraph (1)(b).

QUEBEC

AERODROME/FACILITY DIRECTORY

LACHUTE QC

CSE4

REF	N45 38 22 W74 22 14 1SW 15°W UTC-5(4) Elev 221' VTA A5002 LO6 LO7 LO8 T2 CAP	
OPR	Lachute Aviation 450-562-1330 Reg	
PF	B-1,2 C-3,4,5,6	
CUST	AOE/15 13-01Z‡ 888-226-7277 Mon-Fri exc hols	
FLT PLN	(bil)	
FIC	Québec 866-GOMÉTÉO or 866-WXBRIEF (Toll free w/ in Canada) or 866-541-4105 (Toll free within Canada & USA)	
ACC	Montréal 514-633-3211 or 800-633-1353, all Flt Plns, IFR tng PPR. Flt Plns by Fax at 514-633-2877 & include phone numbers where pilot can be reached prior to dep. IFR clearance or activation 514-633-3211.	
SERVICES		
FUEL	100LL, JA-1	
S	1,2,3,4,5,6	
RWY DATA	Rwy 10(101°)/28(281°) 3989x100 ASPH Thld 10 displ 895'. Thld 28 displ 210'.	
RCR	Opr	
LIGHTING	10-(TE ME), 28-(TE ME) ARCAL-123.0 type K	
COMM	(bil)	
ATF	UNICOM ltd hrs O/T tfc 123.0 5NM 2500 ASL Outside class "C" airspace	
TML	Montréal 124.65 268.3	
PRO	Glider activities aprx May-Jun and Sep-Oct, see Montréal VTPC - Glider Opera ions. VFR Tng Flt not auth 03-12Z‡.	
CAUTION	Due to surrounding terrain, sfc winds may cause windsocks on aprt to show different wind directions. Possibility of deer on rwy.	

ONTARIO

AERODROME/FACILITY DIRECTORY

HAWKESBURY (EAST) ON

CPG5

REF	N45 34 58 W74 32 56 2E 15°W UTC-5(4) Elev 200' VTA A5002	
OPR	East Hawkesbury Airport 514-891-1856 Reg	
PF	C-1,2,3,4,5,6	
FLT PLN	(bil) FIC Québec 866-GOMÉTÉO or 866-WXBRIEF (Toll free within Canada) or 866-541-4105 (Toll free within Canada & USA)	
SERVICES	S 1,4,5	
RWY DATA	Rwy 10/28 2000x60 GRASS Thld 28 displ 200'. Max acft gr wt 2500 lbs.	
RCR	Opr Ltd win maint. Rwy soft in spring. Ski ops.	
COMM	ATF tfc 123.2 5NM 3200 ASL	
PRO	Avoid flt over adj golf course aprx 1.5NM E Thld 28. Touch and go not permitted.	
CAUTION	600 ASL (300 AGL) lgtd twr aprx 4.5NM WSW A/D. 548 ASL (295 AGL) lgtd twr aprx 2NM SE of A/D. Ultra-light acft activity. Tall trees on apch to Rwy 28. Possible wind turbulence on apch Rwy 28.	

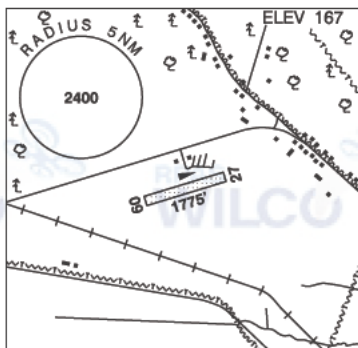
ONTARIO

AERODROME/FACILITY DIRECTORY

HAWKESBURY ON

CNV4

REF	N45 37 W74 39 1.7W 15°W UTC-5(4) Elev 167' A1905 VTA A5002
OPR	Club de vol à voile de Montréal - Montreal Soaring Club 514-667-0400 Reg PPR
PF	B-1 C-2,3,4,5,6
FLT PLN	(bil) Québec 866-GOMÉTÉO or 866-WXBRIEF (Toll free wi hin Canada) or 866-541-4105 (Toll free within Canada & USA)
RWY DATA	Rwy 09/27 1775x400 GRASS
RCR	Opr No win maint. Rwy soft when wet.
COMM	
ATF	tfc 123.3 5NM 3200 ASL
PRO	Rgt hand circuits Rwy 09 (CAR 602.96). Extv glider ac ivity.

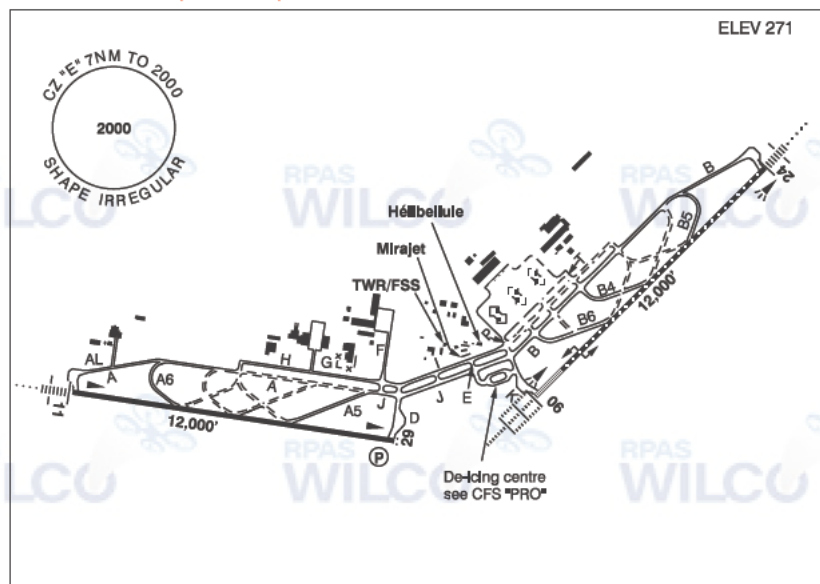


QUEBEC

AERODROME/FACILITY DIRECTORY

MONTRÉAL INTL (MIRABEL) QC

CYMX



REF	N45 40 47 W74 02 19 21NW 15°W UTC-5(4) Elev 271' VTA A5002 LO6 LO7 LO8 HI5 T2 CAP OC
OPR	Aéroports de Montréal 514-633-3223 H24 Cert Ldg fees
PF	C-1,2,3,5,6 D-4
CUST	AOE/15 13-01Z‡ PAX and crew only Hélibellule FBO 24 hrs PN 450-476-1000 Fax 450-476-1002 cargo 13-22Z‡ Mon-Fri (exc hols) 450-476-3168.
FLT PLN	(bil)
FIG	Québec 866-GOMÉTÉO or 866-WXBRIEF (Toll free within Canada) or 866-541-4105 (Toll free within Canada & USA)
ACC	Montréal 514-633-3211 or 800-633-1353. All FIT Plns, IFR tng flts PPR. Fit Plns by Fax at 514-633-2877 & include phone numbers where pilot can be reached prior to dep.
WX	METAR H24. TAF H24, issue times: 00, 06, 12, 18Z.
SERVICES	
FUEL	JA-1, 100LL. JA-1 avbl with Swissport Canada Fuel Services Inc 514-601-8403 or Hélibellule FBO. 100LL avbl with Hélibellule FBO.
S	2
SUP FL	D & A-ice 122.25 Sun from 07Z‡, avbl O/R only 1 hr PN
MIL ADV	Tran acft to L3Harris Technologies Inc. ctc svcg (123.25)
PVT ADV	Aeromag 2000 122.25 450-476-1850 Hélibellule FBO 122.325 450-476-1000 12-22Z‡ Mon-Fri, 13-22Z‡ Sat-Sun. O/T call out chg.
MIL CON	Avjet Holding Inc. 514-212-5964

QUEBEC

AERODROME/FACILITY DIRECTORY

MONTRÉAL INTL (MIRABEL) QC (Cont'd)

CYMX

RWY DATA	Rwy 06(060°)/24(240°) 12,000x200 CONC Rwy 11(113°)/29(293°) 12,000x200 CONC Rwy 29 down 0.65% first 3412' RAG: Rwy 06/24 (Thld 06) BAK 12 (1358'). NOTAM issued when cable is up. Cable availability 12-21Z† Mon-Fri (exc hols). 24 hrs PN. Fees applicable, 450-476-4490 or 514-883-6989. All acft requiring cable 2 hrs PN to L3Harris Technologies Inc. 450-476-4455.
RWY CERT	Rwy 06 RVR 600/Rwy 24 RVR 1200(1/4sm) AGN V Rwy 11/29 AGN V
TWY	All twys are 23m with 13m shoulders. Twy AL, G, P & T: Uncontrolled
APRON	Main & Cargo Aprons: Uncontrolled; broadcast intention on 122.4 before maneuvering.
RCR	Op ^r 07-17Z† Mon-Fri, 08-17Z† Sat-Sun. CRFI O/T call out chg.
LIGHTING	06-AL(TE HI CL TDZL), 24-AN(TE HI CL), 11-AN(TE HI), 29-AS(TE HI) P3
COMM	(bil)
RADIO	Mirabel 119.1 (E) 03-11Z† (emerg only 450-476-3141)
ATIS	(English) 125.7 450-476-3031; (French) 126.1 450-476-3095
APRON ADV	tfc 122.4
GND	121.8 11-03Z†
GND ADV	121.8 03-11Z† (emerg only 450-476-3141)
TWR	119.1 11-03Z† (emerg only 450-476-3141)
MF	rdo 119.1 03-11Z† (emerg only 450-476-3141) Shape irregular (see Mirabel VTPC) 7 NM 2000 ASL and fr 7-11NM btwn 1500-2000 ASL (CAR 602 98)
ARR	Montréal 124.65 268.3
DEP	Montréal 124.65 268.3
VFR ADV	Montréal 134.15
NAV	
ILS	IKP 111.3 (Rwy 06) RVR LOC reliable only within 10° either side of centreline; IIT 111.7 (Rwy 24) RVR LOC reliable only within 10° either side of centreline.

MONTRÉAL INTL (MIRABEL) QC (Cont'd)

CYMX

PRO

TWR in operation from 06h00 to 22h00 local time (11-03Z±)

Control Zone Class C and Transition Areas Class C when TWR in operations.

Control Zone Class E and Transition Areas Class E when RADIO in operations

RADIO only 03-11Z±

Transponder Mode C req'd within Transition Areas Class E and within Class E Control Zone.

Right hand circuits Rwys 24 and 11 (CAR 602.96)

Twy I eastbound only. Twy J westbound only.

In accordance with CAR 602.96(3)(d), the pilot in command of an aircraft taxiing for departure during ILS CAT II ops shall not taxi further than the ILS CAT II holding point without a valid ATC IFR clearance.

The Minister has authorized specific operating restrictions regarding communications intended for the MF, as well as the introduction of a Ground Advisory frequency (GND ADV) pursuant to CARs 602.97 (2), 602.98 (1) and 602.99.

Departure procedure: Prior to taxi for departure; contact GROUND ADV on 121.8 for clearance and initial advisory information. After receiving initial advisory information, GND ADV will initiate communication transfer to RADIO on 119.1 prior to entering the runway/departure surface. Pilots are required to ascertain that there is no likelihood of collision with another aircraft or a vehicle prior to departure as stated in CAR 602.96 2a) and b).

Arrival procedure: After exiting the runway/arrival surface and reporting clear on the radio frequency, pilots will be directed to contact GROUND ADV on 121.8 for ground traffic and taxiing information before entering the taxiway.

TWR and RADIO 24hrs

After landing Rwy 06, left turns on Twy B6 or B4 not authorised for jet acft 24m (79') wingspan or more.

Acft with wingspan of 65m (213') or over must park at gates 111 or 116 and de-ice at gate 116 only. Antonov 225 must park and de-ice at gate 116 and must never use Twys H, I or B between B4 and the holding bay of Rwy 24. Follow TWR/FSS instructions.

De-icing guiding lights procedure: Direction lgts panel; when red, hold posn. When green, follow direction of arrows. Prkg lgts panel; when green taxi straight ahead til turns red.

De-icing centre procedure:

1. **1 hr prior to push back**, ctc AEROMAG on 122.25 or 450-476-1850, with de-icing type.
2. **Immediately prior to push back**, check waiting time.
3. On Twys J or K, hold short of the de-icing pad and ctc AEROMAG 122.25.
4. Follow AEROMAG instructions and guidelines to the South de-icing bay and confirm "**brakes set**", acft configured and engines at idle.
5. When de-icing is completed, **before moving acft** wait for AEROMAG instructions.
6. Exiting de-icing pad, on AEROMAG instructions, ctc Mirabel twr/rdo on 119.1.

QUEBEC

AERODROME/FACILITY DIRECTORY

MONTRÉAL INTL (MIRABEL) QC (Cont'd)

CYMX

PRO (Cont'd)	<p><u>Distance between parking centreline and obstacles:</u></p> <ul style="list-style-type: none"> - With lamp post on right side: 40m - With bldg on left side: 40.5m <p>Low Visibility Procedures: See CAP</p> <p>Airspace: Standardized use of common freq 122.1 in Class G airspace around the CZ.</p> <p>Training: VFR circuits PPR 1-800-633-1353 during TWR hrs of ops.</p> <p>Apron: All acft clockwise except acft with wingspan of 65m (213') and over counterclockwise to access gates 111 & 116.</p> <p>Mirabel aprt is intended for scheduled cargo and gen avn. For gen avn svcs PN with Hélibellule (see PVT ADV).</p> <p>Fighter aircraft only: To reduce the risk of debris ingestion for ops on Rwy 06 & 24, always use the following twys: On departure: Twys A, H, I, K (backtrack rwy if departing Rwy 24). On arrival: Twys K, J, F, H and A (backtrack rwy if landing Rwy 06). For ops on Rwy 11/29 for tkof Rwy 29 always taxi via: Twy A and backtrack rwy to Thld 29.</p> <p>VFR Codes: Refer to MONTRÉAL VTPC section VFR FLIGHTS IN MONTRÉAL/TRUDEAU, MONTRÉAL/ST-HUBERT, MONTRÉAL/MIRABEL AND MONTRÉAL TERMINAL CLASS C AIRSPACE.</p>
CAUTION	Bell Helicopter testing from 1300 to 2000 ASL above CYR601 and CYR624