



# Flight Plan & Site Survey

Created using **RPAS Wilco**<sup>®</sup>

Operation Name:	yorks field
Pilot Name:	██████████
Pilot Certificate:	██████
Flight Start:	January 26, 2023 8:40 AM
Flight End:	January 26, 2023 10:40 AM
Flight Area (Latitude):	51° 11' 36.50" N ( 51.193 )
Flight Area (Longitude):	102° 19' 20.70" W ( -102.322 )
Altitude - Radius:	Alt: 600 ft - Rad: 926.0 m ( 0.5 nm)
Airspace:	UNCONTROLLED
FIR - Contact:	CZWG - 204-983-8338
Weather:	-5.9 Celsius - Snow, Partially cloudy

Please ensure you received all required authorizations prior to flight.

## Disclaimer

This Site Survey was created using RPAS Wilco by AIM Robotics. The flight plan contained is intended only for RPAS flights on the date/time and location specified. The user accepts all responsibility for the accuracy and completeness of the information contained.

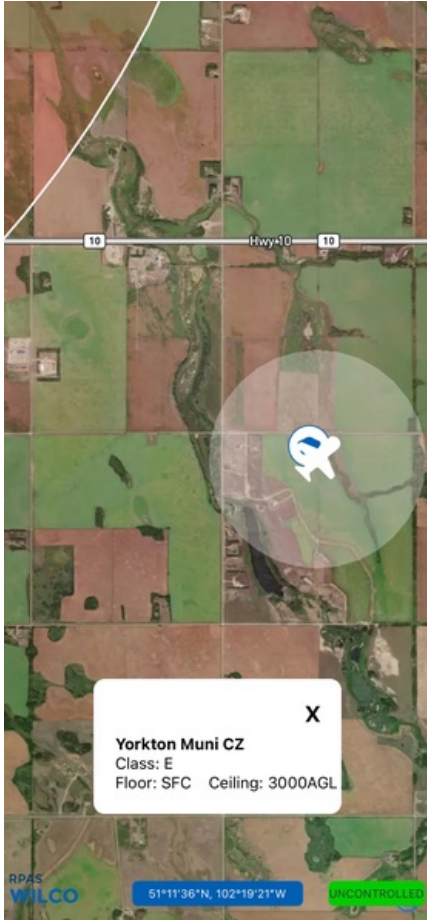
For the complete Terms & Conditions, see

<https://rpswilco.com/#/tnc>



## Included

- Site Survey
- Obstacles (if available)
- Nearby Aerodromes
- Canadian Aviation Regulations
- GFA
- Aerodrome Supplements
  - METAR & TAF (if available)
  - NOTAMS
  - CFS

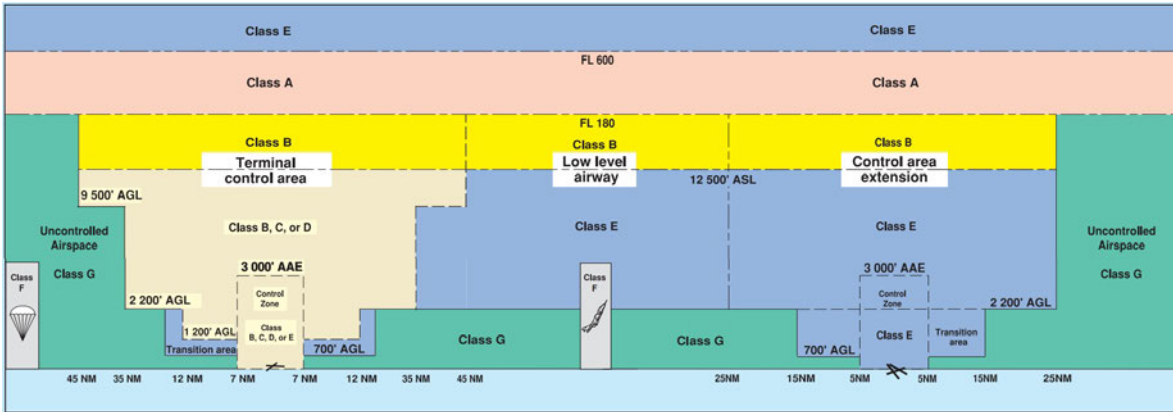
## Flight Map



## MAP Details

	Latitude	Longitude
 MODEL	51° 11' 36.50" N ( 51.193 )	102° 19' 20.70" W ( -102.322 )
 Pilot	51° 11' 40.10" N ( 51.1945 )	102° 19' 24.30" W ( -102.3234 )

## Airspace Classification



## Overlying Airspaces

Class	Name	Floor	Ceiling
B	Yorkton, SK CAE	12500MSL	18000MSL
E	Yorkton Muni, SK TA	700AGL	12500MSL
B	Yorkton Muni, SK TA	12500MSL	18000MSL
E	Yorkton, SK CAE	2200AGL	12500MSL
B	Yorkton, SK CAE	12500MSL	18000MSL
E	V302 Airway	2200AGL	12500MSL
B	V302 Airway	12500MSL	18000MSL
E	V306 Airway	2200AGL	12500MSL
B	V306 Airway	12500MSL	18000MSL
E	V353 Airway	2200AGL	12500MSL
B	V353 Airway	12500MSL	18000MSL
E	T678 Airway	2200AGL	12500MSL
B	T678 Airway	12500MSL	18000MSL

## Nearest Aerodromes & Distance from Operation

YORKTON REGIONAL (CYQV AERODROME Cert)	Lat: 51.265	Long: 102.461	12.505 KM	6.75 NM
MELVILLE MUNICIPALITY (CJV9 AERODROME Reg)	Lat: 50.941	Long: 102.738	40.391 KM	21.81 NM
CHURCHBRIDGE (CKV6 AERODROME Reg)	Lat: 51.017	Long: 101.817	40.376 KM	21.8 NM
CANORA (CJR7 AERODROME Reg)	Lat: 51.629	Long: 102.45	49.23 KM	26.58 NM

## Weather Information for Mission Day

Summary: Partly cloudy throughout the day with snow in the morning and afternoon.

Condition	Temperature	Feels Like	Precipitation	Visibility	Cloud Coverage	Wind Speed	Humidity
Snow, Partially cloudy	5.9 Celsius	13.3 Celsius	98.0 %	9.5 Km	83.5 %	50.4 kph	86.8 %

# Canadian Aviation Regulations

## Division III — General Operating and Flight Rules

For full listing please visit <https://laws-lois.justice.gc.ca/eng/regulations/SOR-96-433/FullText.html#s-901.27>

### Visual Line-of-sight

- **901.11 (1)** Subject to subsection (2) no pilot shall operate a remotely piloted aircraft system unless the pilot or a visual observer has the aircraft in visual line-of-sight at all times during flight.
- **(2)** A pilot may operate a remotely piloted aircraft system without the pilot or a visual observer having the aircraft in visual line-of-sight if the operation is conducted in accordance with a special flight operations certificate — RPAS issued under section 903.03.

### Procedures

- **901.23 (1)** No pilot shall operate a remotely piloted aircraft system unless the following procedures are established:
  - **(a)** normal operating procedures, including pre-flight, take-off, launch, approach, landing and recovery procedures; and
  - **(b)** emergency procedures, including with respect to
    - **(i)** a control station failure,
    - **(ii)** an equipment failure,
    - **(iii)** a failure of the remotely piloted aircraft,
    - **(iv)** a loss of the command and control link,
    - **(v)** a fly-away, and
    - **(vi)** flight termination.
- **(2)** If the manufacturer of the remotely piloted aircraft system provides instructions with respect to the topics referred to in paragraphs (1)(a) and (b), the procedures established under subsection (1) shall reflect those instructions.
- **(3)** No pilot shall conduct the take-off or launch of a remotely piloted aircraft unless the procedures referred to in subsection (1) are reviewed before the flight by, and are immediately available to, each crew member.
- **(4)** No pilot shall operate a remotely piloted aircraft system unless the operation is conducted in accordance with the procedures referred to in subsection (1).

### Site Survey

**901.27** No pilot shall operate a remotely piloted aircraft system unless, before commencing operations, they determine that the site for take-off, launch, landing or recovery is suitable for the proposed operation by conducting a site survey that takes into account the following factors:

- **(a)** the boundaries of the area of operation;
- **(b)** the type of airspace and the applicable regulatory requirements;
- **(c)** the altitudes and routes to be used on the approach to and departure from the area of operation;
- **(d)** the proximity of manned aircraft operations;
- **(e)** the proximity of aerodromes, airports and heliports;
- **(f)** the location and height of obstacles, including wires, masts, buildings, cell phone towers and wind turbines;
- **(g)** the predominant weather and environmental conditions for the area of operation; and
- **(h)** the horizontal distances from persons not involved in the operation.

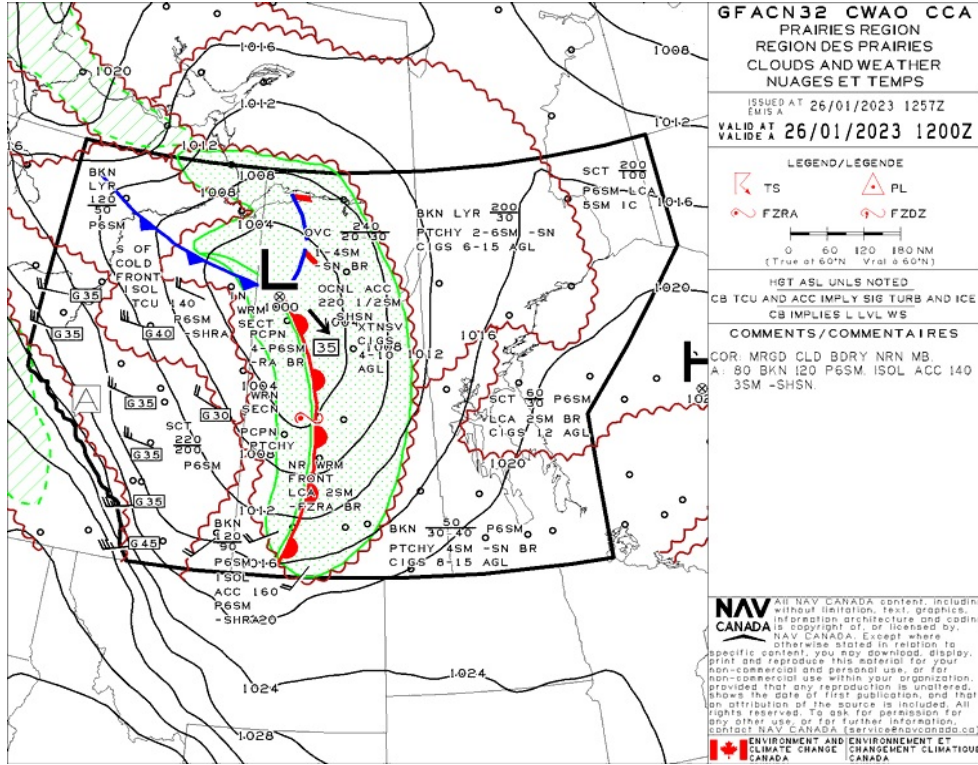
### Operations at or in the Vicinity of an Aerodrome, Airport or Heliport

- **901.47 (1)** No pilot shall operate a remotely piloted aircraft at or near an aerodrome that is listed in the *Canada Flight Supplement* or the *Water Aerodrome Supplement* in a manner that could interfere with an aircraft operating in the established traffic pattern.
- **(2)** Subject to section 901.73 no pilot shall operate a remotely piloted aircraft at a distance of less than
  - **(a)** three nautical miles from the centre of an airport; and
  - **(b)** one nautical mile from the centre of a heliport.
- **(3)** No pilot shall operate a remotely piloted aircraft at a distance of less than three nautical miles from the centre of an aerodrome operated under the authority of the Minister of National Defence unless the operation is conducted in accordance with a special flight operations certificate — RPAS issued under section 903.03.

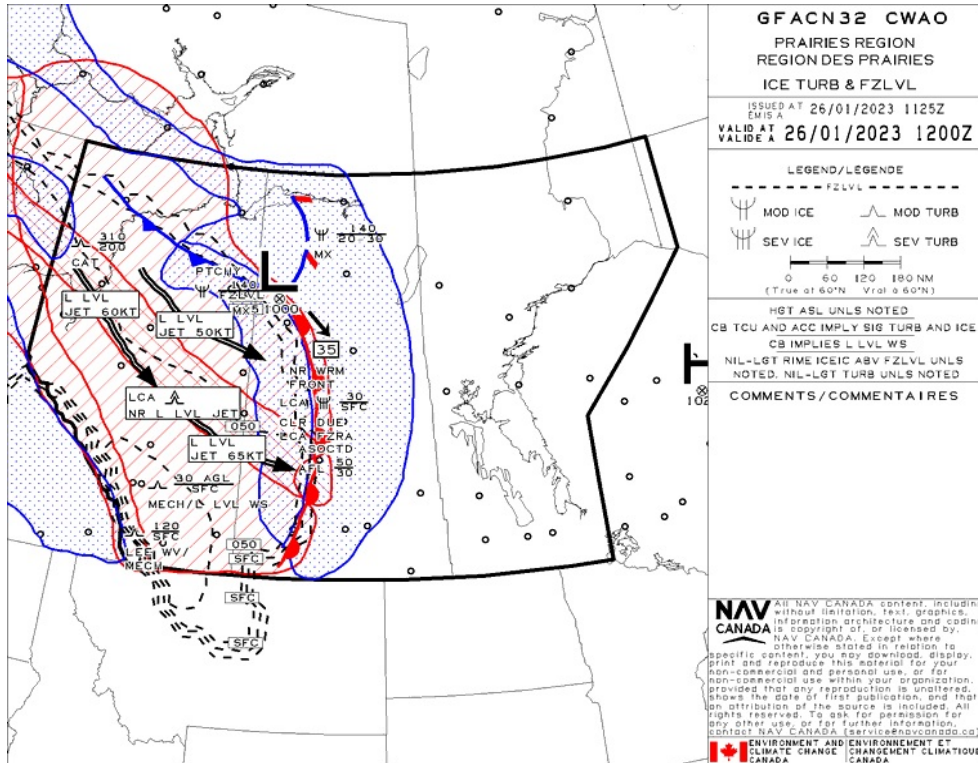
### Records

- **901.48 (1)** Every owner of a remotely piloted aircraft system shall keep the following records:
  - **(a)** a record containing the names of the pilots and other crew members who are involved in each flight and, in respect of the system, the time of each flight or series of flights and
  - **(b)** a record containing the particulars of any mandatory action and any other maintenance action, modification or repair performed on the system, including
    - **(i)** the names of the persons who performed them,
    - **(ii)** the dates they were undertaken,
    - **(iii)** in the case of a modification, the manufacturer, model and a description of the part or equipment installed to modify the system, and
    - **(iv)** if applicable any instructions provided to complete the work.
- **(2)** Every owner of a remotely piloted aircraft system shall ensure that the records referred to in subsection (1) are made available to the Minister on request and are retained for a period of
  - **(a)** in the case of the records referred to in paragraph (1)(a), 12 months after the day on which they are created; and
  - **(b)** in the case of the records referred to in paragraph (1)(b), 24 months after the day on which they are created.
- **(3)** Every owner of a remotely piloted aircraft system who transfers ownership of the system to another person shall, at the time of transfer, also deliver to that person all of the records referred to in paragraph (1)(b).

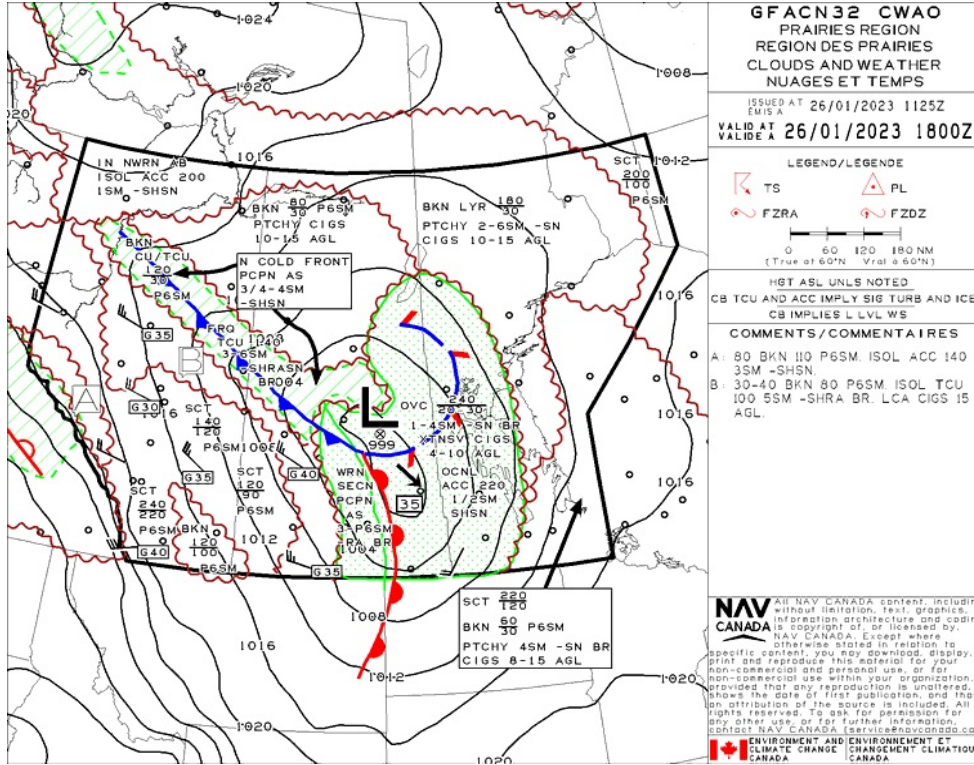
## GFA Issue time + 00 hr - CLOUDS AND WEATHER



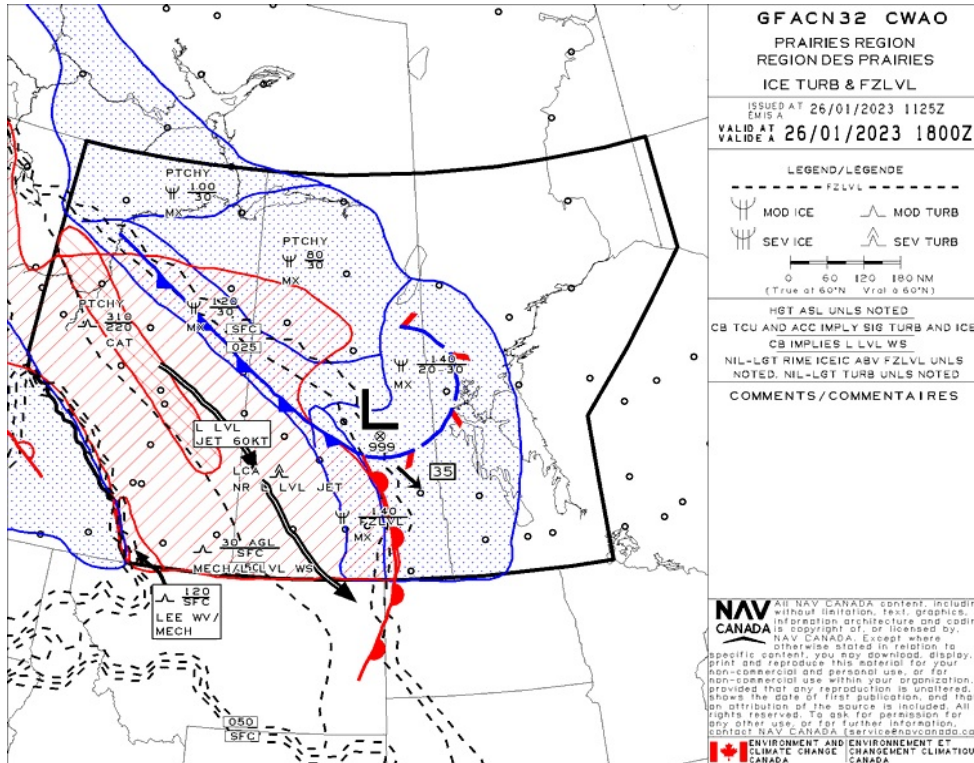
## GFA Issue time + 00 hr - TURBULENCE, ICING AND FREEZING LEVEL



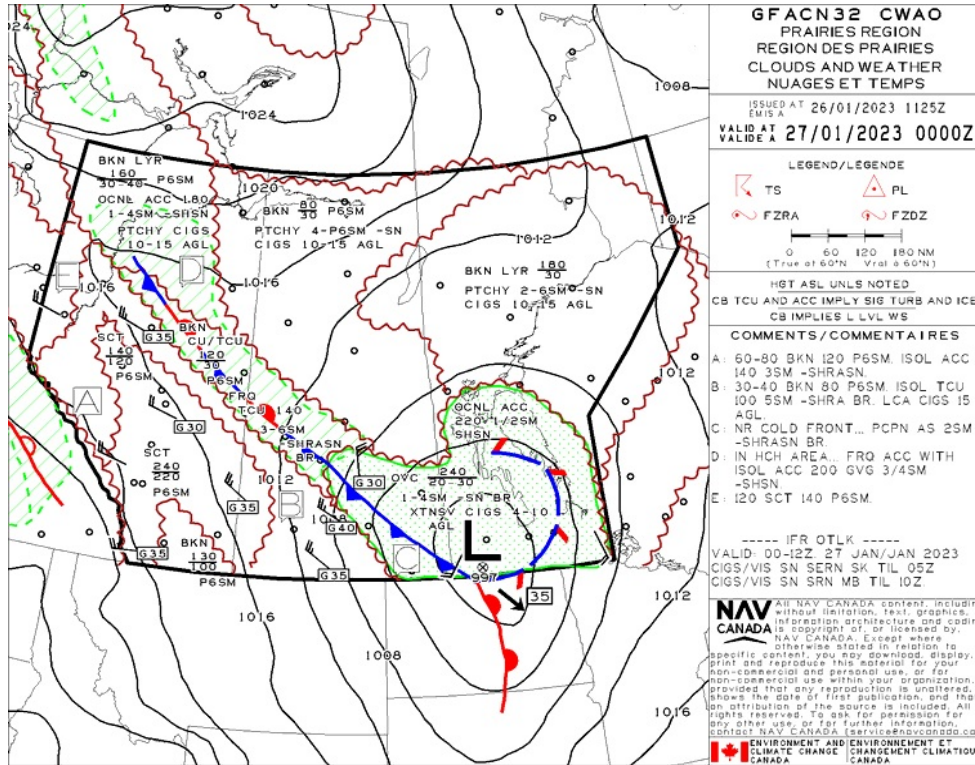
## GFA Issue time + 06 hr - CLOUDS AND WEATHER



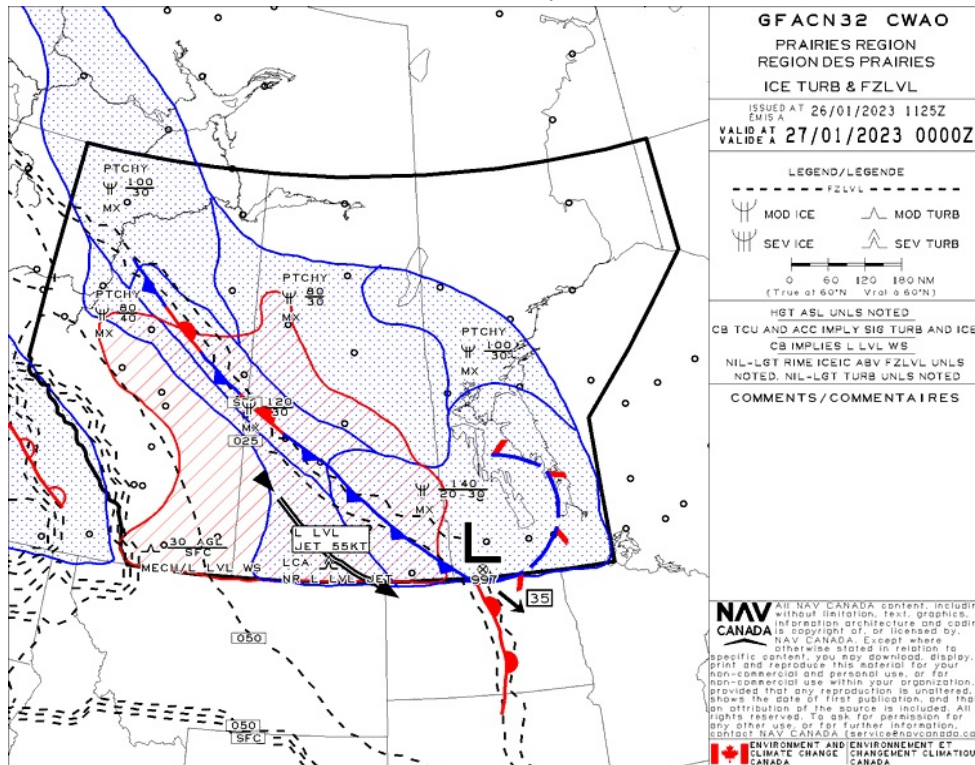
## GFA Issue time + 06 hr - TURBULENCE, ICING AND FREEZING LEVEL



## GFA Issue time + 12 hr - CLOUDS AND WEATHER



## GFA Issue time + 12 hr - TURBULENCE, ICING AND FREEZING LEVEL





# Flight Plan & Site Survey

YORKTON REGIONAL - CYQV - Cert

## METAR

METAR CYQV 261300Z AUTO 18012G19KT 9SM OVC011 M08/M10 A2975 RMK SLP110=		
<b>METAR</b>	<b>LOCATION</b> CYQV - YORKTON REGIONAL/SK	<b>DATE - TIME</b> 26 JANUARY 2023 - 1300 UTC
<b>WIND</b> 180 TRUE @ 12 KNOTS <b>GUSTS</b> 19 KNOTS	<b>VISIBILITY</b> 9 STAT. MILES	<b>RUNWAY VISUAL RANGE</b>
<b>WEATHER</b>	<b>CLOUDINESS</b> OVERCAST 1100 FT	<b>TEMP / DEWPOINT</b> -8 C / -10 C
<b>ALTIMETER</b> 29.75 IN HG	<b>RECENT WEATHER</b>	<b>WIND SHEAR</b>

METAR CYQV 261200Z AUTO 20009KT 9SM OVC015 M07/M10 A2985 RMK PRESFR SLP144=		
<b>METAR</b>	<b>LOCATION</b> CYQV - YORKTON REGIONAL/SK	<b>DATE - TIME</b> 26 JANUARY 2023 - 1200 UTC
<b>WIND</b> 200 TRUE @ 9 KNOTS	<b>VISIBILITY</b> 9 STAT. MILES	<b>RUNWAY VISUAL RANGE</b>
<b>WEATHER</b>	<b>CLOUDINESS</b> OVERCAST 1500 FT	<b>TEMP / DEWPOINT</b> -7 C / -10 C
<b>ALTIMETER</b> 29.85 IN HG	<b>RECENT WEATHER</b>	<b>WIND SHEAR</b>

METAR CYQV 261100Z AUTO 21009KT 9SM OVC015 M07/M10 A2992 RMK SLP170=		
<b>METAR</b>	<b>LOCATION</b> CYQV - YORKTON REGIONAL/SK	<b>DATE - TIME</b> 26 JANUARY 2023 - 1100 UTC
<b>WIND</b> 210 TRUE @ 9 KNOTS	<b>VISIBILITY</b> 9 STAT. MILES	<b>RUNWAY VISUAL RANGE</b>
<b>WEATHER</b>	<b>CLOUDINESS</b> OVERCAST 1500 FT	<b>TEMP / DEWPOINT</b> -7 C / -10 C
<b>ALTIMETER</b> 29.92 IN HG	<b>RECENT WEATHER</b>	<b>WIND SHEAR</b>

## NOTAM



Q) CZWG/QCAAS/IV/B/AE/000/999/5116N10228W070  
A) CYQV B) 2211221440 C) 2302102359  
E) REGINA RDO REMOTE COM OUT ET (RCO) 296.6MHZ AT YORKTON U/S)

(G0033/23 NOTAMR G2417/22

Q) CZXX/QOECH/IV/NBO/E/000/999/5518N09358W999  
A) CZWG CZY B) 2301111838 C) 2304121800EST  
E) A ACFT, REGARD ESS OF THE STATE OF REGISTRY, DIRECT Y OR  
INDIRECT Y OWNED, CHARTERED, EASED, OPERATED OR OTHERWISE  
CONTRO ED BY A PERSON CONNECTED WITH EITHER THE RUSSIAN  
FEDERATION OR OF BE ARUS OR BY A CORPORATION OR ENTITY THAT IS  
INCORPORATED OR FORMED UNDER THE AWS OF THE RUSSIAN FEDERATION  
OR BE ARUS, AND A OPERATORS HO DING AN AIR OPERATOR CERTIFICATE  
(AOC) ISSUED BY RUSSIAN FEDERATION AND/OR BE ARUSIAN AUTHORITIES  
ARE PROHIBITED TO ENTER, EXIT OR OVERF Y CANADA'S TERRITORIA  
AIRSPACE (INC UDING F T WITHIN 12NM OF CANADA'S COASTS).  
EXCEPTIONS PERMITTED FOR ACFT EXPERIENCING INF IGH T EMERG.

A AUTH OBTAINED PRIOR TO 27 FEB 2022 FOR ACFT AND OPS SUBJECT  
TO THIS NOTAM ARE REVOKED.

HUMANITARIAN, SAR, MEDEVAC AND ANY OTHER F T SEEKING AN EXCEPTION  
TO THIS RESTRICTION MUST RECEIVE AUTH GRANTED AFTER 27 FEB 2022  
FM THE MINISTER OF TRANSPORT TO OPERATE IN CANADA'S TERRITORIA  
AIRSPACE. AFFECTED ACFT WISHING TO OBTAIN SUCH AN AUTH OR C R  
INTO CANADA'S TERRITORIA AIRSPACE MAY APP Y TO THE MINISTER OF  
TRANSPORT AT 1-877-992-6853 OR 1-613-992-6853 OR BY EMAI AT  
OPERATIONS.AVIATION(AT)TC.GC.CA.)

(A2212/23 NOTAMR A2205/23

Q) CZWG/QFAXX/IV/NBO/A/000/999/5116N10228W005  
A) CYQV B) 2301251417 C) 2301261417  
E) RSC 04/22 10 PCT COMPACTED SNOW. VA ID JAN 25 1411 - JAN 26 1411.

RSC 13/31 90 PCT 3/4IN DRY SNOW ON TOP OF COMPACTED SNOW AND 10  
PCT COMPACTED SNOW/GRAVE MIX. WORING ON C EANING 13-31 FIRST  
THING THIS MORNING . VA ID JAN 25 1412 - JAN 26 1413.

ADDN NON-GRF/TA PA INFO:

CRFI 04 NR/NR/NR.  
CRFI 22 NR/NR/NR.  
CRFI 13 NR/NR/NR.  
CRFI 31 NR/NR/NR.

RMK: TWY RAVO HAS 80 PCT DRY SNOW COVERAGE 1/2INCH TO 1 INCH DEEP  
C EARING SNOW ON BRAVO FIRST THING

RMK: APN  
)



## MELVILLE MUNICIPALITY - CJV9 - Reg

### NOTAM

(G0033/23 NOTAMR G2417/22  
Q) CZXX/QOECH/IV/NBO/E/000/999/5518N09358W999  
A) CZWG CZYZ B) 2301111838 C) 2304121800EST  
E) A ACFT, REGARD ESS OF THE STATE OF REGISTRY, DIRECT Y OR  
INDIRECT Y OWNED, CHARTERED, EASED, OPERATED OR OTHERWISE  
CONTRO ED BY A PERSON CONNECTED WITH EITHER THE RUSSIAN  
FEDERATION OR OF BE ARUS OR BY A CORPORATION OR ENTITY THAT IS  
INCORPORATED OR FORMED UNDER THE AWS OF THE RUSSIAN FEDERATION  
OR BE ARUS, AND A OPERATORS HO DING AN AIR OPERATOR CERTIFICATE  
(AOC) ISSUED BY RUSSIAN FEDERATION AND/OR BE ARUSIAN AUTHORITIES  
ARE PROHIBITED TO ENTER, EXIT OR OVERF Y CANADA'S TERRITORIA  
AIRSPACE (INC UDING F T WITHIN 12NM OF CANADA'S COASTS).  
EXCEPTIONS PERMITTED FOR ACFT EXPERIENCING INF IGH T EMERG.

A AUTH OBTAINED PRIOR TO 27 FEB 2022 FOR ACFT AND OPS SUBJECT  
TO THIS NOTAM ARE REVOKED.

HUMANITARIAN, SAR, MEDEVAC AND ANY OTHER F T SEEKING AN EXCEPTION  
TO THIS RESTRICTION MUST RECEIVE AUTH GRANTED AFTER 27 FEB 2022  
FM THE MINISTER OF TRANSPORT TO OPERATE IN CANADA'S TERRITORIA  
AIRSPACE. AFFECTED ACFT WISHING TO OBTAIN SUCH AN AUTH OR C R  
INTO CANADA'S TERRITORIA AIRSPACE MAY APP Y TO THE MINISTER OF  
TRANSPORT AT 1-877-992-6853 OR 1-613-992-6853 OR BY EMAI AT  
OPERATIONS.AVIATION(AT)TC.GC.CA.)

(M3218/22 NOTAMR M2344/22  
Q) CZWG/QCAAS/IV/B/AE/000/999/5116N10228W070  
A) CYQV B) 2211221440 C) 2302102359  
E) REGINA RDO REMOTE COM OUT ET (RCO) 296.6MHZ AT YORKTON U/S)



## CHURCHBRIDGE - CKV6 - Reg

### NOTAM

(G0033/23 NOTAMR G2417/22  
Q) CZXX/QOECH/IV/NBO/E/000/999/5518N09358W999  
A) CZWG CZYZ B) 2301111838 C) 2304121800EST  
E) A ACFT, REGARD ESS OF THE STATE OF REGISTRY, DIRECT Y OR  
INDIRECT Y OWNED, CHARTERED, EASED, OPERATED OR OTHERWISE  
CONTRO ED BY A PERSON CONNECTED WITH EITHER THE RUSSIAN  
FEDERATION OR OF BE ARUS OR BY A CORPORATION OR ENTITY THAT IS  
INCORPORATED OR FORMED UNDER THE AWS OF THE RUSSIAN FEDERATION  
OR BE ARUS, AND A OPERATORS HO DING AN AIR OPERATOR CERTIFICATE  
(AOC) ISSUED BY RUSSIAN FEDERATION AND/OR BE ARUSIAN AUTHORITIES  
ARE PROHIBITED TO ENTER, EXIT OR OVERF Y CANADA'S TERRITORIA  
AIRSPACE (INC UDING F T WITHIN 12NM OF CANADA'S COASTS).  
EXCEPTIONS PERMITTED FOR ACFT EXPERIENCING INF IGH T EMERG.

A AUTH OBTAINED PRIOR TO 27 FEB 2022 FOR ACFT AND OPS SUBJECT  
TO THIS NOTAM ARE REVOKED.

HUMANITARIAN, SAR, MEDEVAC AND ANY OTHER F T SEEKING AN EXCEPTION  
TO THIS RESTRICTION MUST RECEIVE AUTH GRANTED AFTER 27 FEB 2022  
FM THE MINISTER OF TRANSPORT TO OPERATE IN CANADA'S TERRITORIA  
AIRSPACE. AFFECTED ACFT WISHING TO OBTAIN SUCH AN AUTH OR C R  
INTO CANADA'S TERRITORIA AIRSPACE MAY APP Y TO THE MINISTER OF  
TRANSPORT AT 1-877-992-6853 OR 1-613-992-6853 OR BY EMAI AT  
OPERATIONS.AVIATION(AT)TC.GC.CA.)

(M3218/22 NOTAMR M2344/22  
Q) CZWG/QCAAS/IV/B/AE/000/999/5116N10228W070  
A) CYQV B) 2211221440 C) 2302102359  
E) REGINA RDO REMOTE COM OUT ET (RCO) 296.6MHZ AT YORKTON U/S)



CANORA - CJR7 - Reg

## NOTAM

(J8796/22 NOTAMN  
Q) CZWG/QFAAW/IV/NBO/A/000/999/5138N10227W005  
A) CXXX B) 2301010000 C) PERM  
E) CJR7 CANORA  
AMEND PUBLICATIONS: AD PERMANENT Y C OSED)

(G0033/23 NOTAMR G2417/22  
Q) CZXX/QECH/IV/NBO/E/000/999/5518N09358W999  
A) CZWG CZYZ B) 2301111838 C) 2304121800EST  
E) A ACFT, REGARDLESS OF THE STATE OF REGISTRY, DIRECTLY OR  
INDIRECTLY OWNED, CHARTERED, LEASED, OPERATED OR OTHERWISE  
CONTROLLED BY A PERSON CONNECTED WITH EITHER THE RUSSIAN  
FEDERATION OR OF BEARUS OR BY A CORPORATION OR ENTITY THAT IS  
INCORPORATED OR FORMED UNDER THE LAWS OF THE RUSSIAN FEDERATION  
OR BEARUS, AND A OPERATORS HOLDING AN AIR OPERATOR CERTIFICATE  
(AOC) ISSUED BY RUSSIAN FEDERATION AND/OR BEARUSIAN AUTHORITIES  
ARE PROHIBITED TO ENTER, EXIT OR OVERFLY CANADA'S TERRITORIAL  
AIRSPACE (INCLUDING FT WITHIN 12NM OF CANADA'S COASTS).  
EXCEPTIONS PERMITTED FOR ACFT EXPERIENCING INFIGHT EMERG.

A AUTH OBTAINED PRIOR TO 27 FEB 2022 FOR ACFT AND OPS SUBJECT  
TO THIS NOTAM ARE REVOKED.

HUMANITARIAN, SAR, MEDEVAC AND ANY OTHER FT SEEKING AN EXCEPTION  
TO THIS RESTRICTION MUST RECEIVE AUTH GRANTED AFTER 27 FEB 2022  
FM THE MINISTER OF TRANSPORT TO OPERATE IN CANADA'S TERRITORIAL  
AIRSPACE. AFFECTED ACFT WISHING TO OBTAIN SUCH AN AUTH OR CLR  
INTO CANADA'S TERRITORIAL AIRSPACE MAY APPLY TO THE MINISTER OF  
TRANSPORT AT 1-877-992-6853 OR 1-613-992-6853 OR BY EMAIL AT  
OPERATIONS.AVIATION(AT)TC.GC.CA.)

(M3218/22 NOTAMR M2344/22  
Q) CZWG/QCAAS/IV/B/AE/000/999/5116N10228W070  
A) CYQV B) 2211221440 C) 2302102359  
E) REGINA RDO REMOTE COM OUT ET (RCO) 296.6MHZ AT YORKTON U/S)

## SASKATCHEWAN

## AERODROME/FACILITY DIRECTORY

## YORKTON REGIONAL SK

CYQV

<b>REF</b>	N51 15 53 W102 27 41 2.8N 7°E (2018) UTC-6 Elev 1635' A5006 LO2 HI4 CAP	
<b>OPR</b>	City 306-786-1730 Cert	
<b>PF</b>	A-1 C-2,3,4,5,6	
<b>FLT PLN</b>		
<b>FIC</b>	Edmonton 866-WXBRIEF (Toll free within Canada) or 866-541-4102 (Toll free within Canada & USA)	
<b>WX</b>	METAR AUTO H24 (See COMM) TAF 12-06Z, issue times: 12, 18, 00Z. WxCam	
<b>SERVICES</b>	Call out chg may be levied for one or more svcs	
<b>FUEL</b>	100LL, JA-1 (FSII avbl)	
<b>OIL</b>	All	
<b>S</b>	1,2,3,4,5,6	
<b>PVT ADV</b>	Leading Edge Aviation 122.8 306-786-1863 Good Spirit Air Service 123.3 306-786-3352 14-23Z Mon-Fri	
<b>RWY DATA</b>	Rwy 04(038°)/22(218°) 4800x148 ASPH Rwy 22 up 0.79% Rwy 13(128°)/31(308°) 2984x98 GRVL/ASPH, first 600' Rwy 13 ASPH	
<b>RWY CERT</b>	Rwy 04/22 AGN IIIB Rwy 13/31 AGN II	
<b>TWY CERT</b>	Twy B II	
<b>RCR</b>	Opr 14-24Z Mon-Fri exc hols O/T 306-786-3345 3hr PN cost recovery Rwy 13/31 rstd to acft less than 15,000 lbs PLR/PCN	
<b>LIGHTING</b>	04-AD(TE ME), 22-AD(TE ME), 13-(TE ME), 31-(TE ME) ARCAL-119.65 type K	
<b>COMM</b>		
<b>RCO</b>	Regina rdo 119.65 296.6 (RAAS) 12-04Z Edmonton rdo 123.475 (FISE) 126.7 (bcst)	
<b>MF</b>	Regina rdo 12-04Z O/T t/c 119.65 296.6 5NM 4600 ASL (CAR 602.98)	
<b>PAL</b>	Winnipeg Ctr 132.525	
<b>AWOS</b>	128.725	
<b>NAV</b>		
<b>VOR/DME</b>	YQV 115.8 Ch 105 N51 15 51 W102 28 07 (1675')	

## SASKATCHEWAN

## AERODROME/FACILITY DIRECTORY

## MELVILLE MUNI SK

CJV9

<b>REF</b>	N50 56 29 W102 44 16 1.5E 8°E (2013) UTC-6 Elev 1800' A5006 LO2	
<b>OPR</b>	City 306-730-8424 Fax 306-728-5832 Reg	
<b>PF</b>	C-2,3,4,5	
<b>FLT PLN</b>	<b>FIC</b> Edmonton 866-WXBRIEF (Toll free within Canada) or 866-541-4102 (Toll free within Canada & USA)	
<b>SERVICES</b>	<b>S</b> 6	
<b>RWY DATA</b>	Rwy 10(105°)/28(285°) 2600x75 ASPH <b>RCR</b> Opr	
<b>LIGHTING</b>	10-(TE LO), 28-(TE LO) ARCAL-123.2 type J	
<b>COMM</b>	<b>ATF</b> tfc 123.2 5NM 4800 ASL	

## SASKATCHEWAN

## AERODROME/FACILITY DIRECTORY

## CHURCHBRIDGE sk

CKV6

<b>REF</b>	N51 01 W101 49 7.2NNE 7°E (2015) UTC-6 Elev 1745' A5006	
<b>OPR</b>	Rural Municipality of Churchbridge 306-896-2522 Fax 306-896-2743 Reg PPR	
<b>PF</b>	C-1 D-2,3,4,5,6	
<b>FLT PLN</b>	<b>FIC</b> Edmonton 866-WXBRIEF (Toll free within Canada) or 866-541-4102 (Toll free within Canada & USA)	
<b>SERVICES</b>	<b>S</b> 5	
<b>RWY DATA</b>	Rwy 17(173°)/35(353°) 2450x75 turf	
<b>RCR</b>	Opr or W. Waldherr 306-896-2994. Ltd win maint, snow cleared on req.	
<b>COMM</b>	<b>ATF</b> tfc 123.2 5NM 4800 ASL	
<b>PRO</b>	Rgt hand circuits Rwy 35 (CAR 602.96).	

## SASKATCHEWAN

## AERODROME/FACILITY DIRECTORY

## CANORA SK

CJR7

<b>REF</b>	N51 37 44 W102 27 00 Adj W 8°E (2012) UTC-6 Elev 1603' A5006
<b>OPR</b>	Town 306-563-5773 Reg
<b>PF</b>	C-1,2,4,5
<b>FLT PLN</b>	
<b>FIC</b>	Edmonton 866-WXBRIEF (Toll free within Canada) or 866-541-4102 (Toll free within Canada & USA)
<b>RWY DATA</b>	Rwy 17(173°)/35(353°) 3400x150 turf
<b>RCR</b>	Opr No win maint
<b>COMM</b>	
<b>ATF</b>	tfc 123.2 5NM 4700 ASL
<b>CAUTION</b>	15' trees at thld Rwy 17. 35' p-line 625' S of Rwy 35. Pvt A/D 1W.

