



Flight Plan & Site Survey

Created using **RPAS Wilco**[®]

Operation Name:	Mission 01-22-2023
Pilot Name:	[REDACTED]
Pilot Certificate:	[REDACTED]
Flight Start:	January 22, 2023 2:23 PM
Flight End:	January 22, 2023 4:23 PM
Flight Area (Latitude):	52° 12' 8.30" N (52.202)
Flight Area (Longitude):	113° 42' 18.60" W (-113.705)
Altitude - Radius:	Alt: 700 ft - Rad: 740.8 m (0.4 nm)
Airspace:	UNCONTROLLED
FIR - Contact:	CZEG - 780-890-8397
Weather:	-1.3 Celsius - Partially cloudy

Please ensure you received all required authorizations prior to flight.

Disclaimer

This Site Survey was created using RPAS Wilco by AIM Robotics. The flight plan contained is intended only for RPAS flights on the date/time and location specified. The user accepts all responsibility for the accuracy and completeness of the information contained.

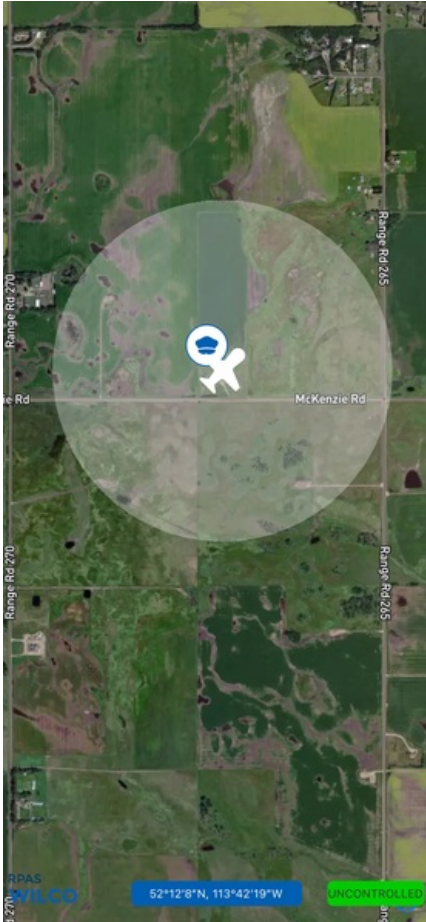
For the complete Terms & Conditions, see

<https://rpswilco.com/#/tnc>



Included

- Site Survey
- Obstacles (if available)
- Nearby Aerodromes
- Canadian Aviation Regulations
- GFA
- Aerodrome Supplements
 - METAR & TAF (if available)
 - NOTAMS
 - CFS

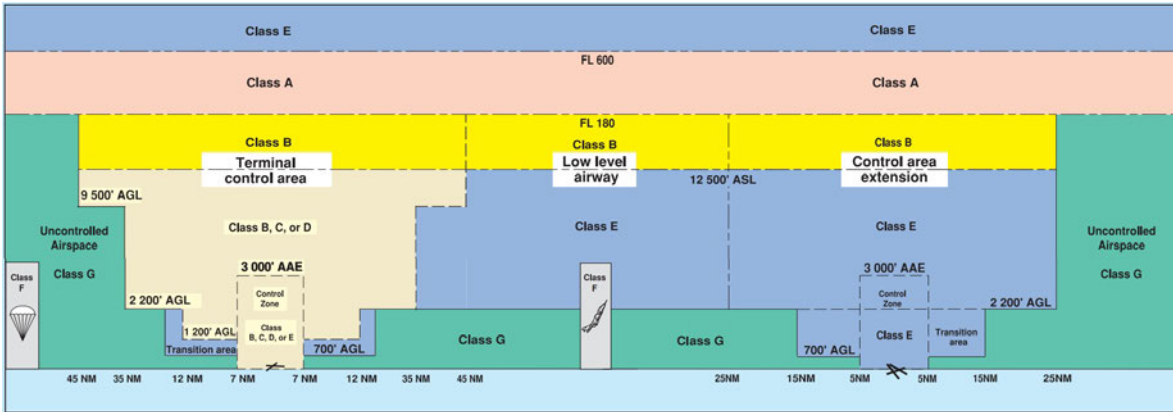
Flight Map



MAP Details

	Latitude	Longitude
 MODEL	52° 12' 8.30" N (52.202)	113° 42' 18.60" W (-113.705)
 Pilot	52° 12' 11.90" N (52.2033)	113° 42' 22.20" W (-113.7062)

Airspace Classification



Overlying Airspaces

Class	Name	Floor	Ceiling
E	Red Deer, AB TA	4000MSL	12500MSL
B	Red Deer, AB TA	12500MSL	18000MSL
E	T753 Airway	2200AGL	12500MSL
B	T753 Airway	12500MSL	18000MSL
E	T759 Airway	2200AGL	12500MSL
B	T759 Airway	12500MSL	18000MSL

Nearest Aerodromes & Distance from Operation

ALLAN DALE RESIDENCE (CAD2 HELIPORT Reg)	Lat: 52.269	Long: 113.699	7.428 KM	4.01 NM
RED DEER REGIONAL (CYQF AERODROME Cert)	Lat: 52.185	Long: 113.894	13.014 KM	7.03 NM
RED DEER REGIONAL HOSPITAL CENTRE (CRD3 HELIPORT Cert)	Lat: 52.262	Long: 113.816	10.052 KM	5.43 NM
TRUANT SOUTH (CRD6 AERODROME Reg)	Lat: 52.278	Long: 113.915	16.583 KM	8.95 NM

Weather Information for Mission Day

Summary: Partly cloudy throughout the day.

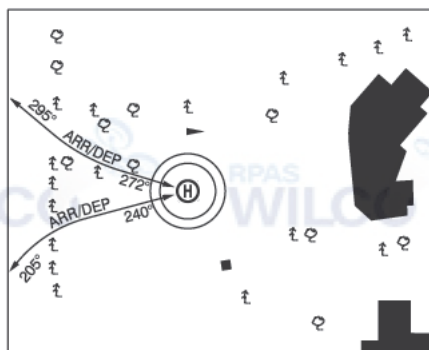
Condition	Temperature	Feels Like	Precipitation	Visibility	Cloud Coverage	Wind Speed	Humidity
Partially cloudy	1.3 Celsius	7.4 Celsius	0.0 %	14.9 Km	54.1 %	36.0 kph	69.9 %

ALBERTA

AERODROME/FACILITY DIRECTORY

RED DEER / ALLAN DALE RESIDENCE AB (Heli)

CAD2



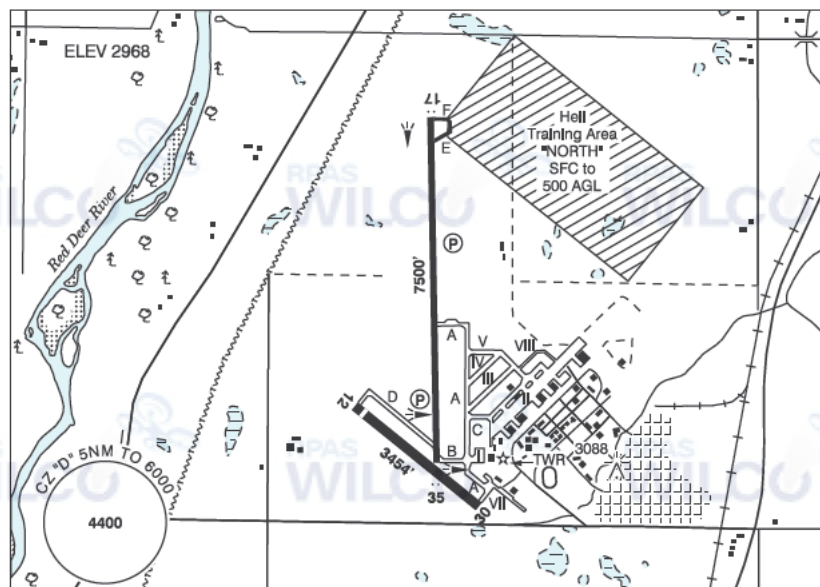
REF	N52 16 11 W113 41 59 4.1E 15°E (2015) UTC-7(6) Elev 3123' A5005 A5015
OPR	Allan Dale 403-350-8051 Reg PPR
PF	C-1,2,3,4,5,6
FLT PLN	
FIC	Edmonton 866-WXBRIEF (Toll free within Canada) or 866-541-4102 (Toll free within Canada & USA)
HELI DATA	FATO 58' dia GRASS TLOF 20' x 20' CONC Safety Area 77' dia Max heli overall length 38.4'
COMM	
RCO	Edmonton rdo 123.475 (FISE) 126.7 (bcst)
TWR	Red Deer 118.5 (V) 13-05Z† (emerg only 403-886-4547)
MF	tfc 118.5 05-13Z† 5NM 6000 ASL
PRO	Arr/dep curved 272° to 295° fr heli, slope 8% (H3), day use only. Arr/dep curved 240° to 205° fr heli, slope 8% (H3), day use only.
CAUTION	Trees on short final on all apch

ALBERTA

AERODROME/FACILITY DIRECTORY

RED DEER REGIONAL AB

CYQF



REF	N52 11 06 W113 53 40 6SSW 14°E (2016) UTC-7(6) Elev 2968' A5005 A5015 LO2 HI3 CAP
OPR	Red Deer Regional Aprt Authority 403-886-4388 Cert Ldg fees
PF	A-1,2,3,7 C-2,3,4,5,6
FLT PLN	<p>FIG Edmonton 866-WXBRIEF (Toll free within Canada) or 866-541-4102 (Toll free within Canada & USA)</p> <p>ACC Edmonton IFR 888-358-7526</p> <p>WX METAR AUTO H24 (see COMM) WxCam TAF H24, issue times: 00, 06, 12, 18Z.</p>
SERVICES	Call out chg may be levied for one or more svcs
FUEL	100LL, JA Hillman Air (100LL only, self serve); Sky Wings Avn (Executive Fit Centre) 15-04Z‡; Tucana Avn
OIL	All
S	1,2,3,5 Tucana Avn
SUP FL	D & A-ice 2 hr PN Tucana Avn, LPOX
JASU	10/15
PVT ADV	Hillman Air 403-886-4187; Sky Wings Avn (Executive Fit Centre) 123.4 403-886-5191 15-04Z‡; Tucana Avn 403-596-6320.
RWY DATA	Rwy 17(165°)/35(345°) 7500x100 ASPH Rwy 12(115°)/30(295°) 3454x100 ASPH Thld 12 displ 200' Rwy 30 up 0.52% RESA: 17/35 492'
RWY CERT	Rwy 17/35 AGN IIIB Rwy 12/30 AGN II
TWY CERT	Twy D AGN II
RCR	Opr CRFI & Win maint 1330-2200Z‡ Mon-Fri exc hols, O/T 2 hrs PN ctc 403-318-7842. Call out charge may be levied. PLR.
LIGHTING	12-(TE ME), 30-(TE ME), 17-AS(TE ME) P2, 35-AS(TE ME) P2

ALBERTA

AERODROME/FACILITY DIRECTORY

RED DEER REGIONAL AB (Cont'd)

CYQF

COMM

RCO Edmonton rdo 123.475 (FISE) 126.7 (bcst)
ATIS 124.0 13-05Z†
GND 121.9 13-05Z†
TWR 118.5 (V) 13-05Z† (emerg only 403-886-4547)
MF tfc 118.5 05-13Z† 5NM 6000 ASL (CAR 602.98)
PAL Edmonton Ctr 132.85
AWOS 124.0 05-13Z†

NAV

NDB Red Deer YQF 320 (L) N52 07 42 W113 53 58
DME Red Deer 6G 113.8 Ch 85 N52 10 52 W113 52 58 (2974') Pvt

PRO

HELI Rgt hand circuits Rwys 12 & 17 (CAR 602.96).
 Use Heli Training Area "NORTH" sfc to 500 AGL.

CAUTION

Wildlife in vic of rwys. Acft at opposite ends of Rwy 17/35 may not be vis to each other. Twy D sfc ruf. Practice IFR approaches in vic Rwy 17/35 extended ctr lines beyond CZ. Extv flt tng within 20NM of A/D, all quadrants to 6500 ASL. Parajumps activity in vic Innisfail A/D 8NM SSW check for NOTAM. Intsv gliding activity to 6400 ASL in vic Olds (Netook) A/D 21NM S by NOTAM. Winch cable may extend from sfc to 5800 ASL (2500 AGL).

ALBERTA

AERODROME/FACILITY DIRECTORY

RED DEER REGIONAL HOSP CENTRE AB (Heli)

CRD3

REF	N52 15 43 W113 48 57 15°E (2013) UTC-7(6) Elev 2877' A5005 A5015	
OPR	AHS-Protective Services 403-343-4744 Cert PPR	
PF	A-1,2,3 C-4,5,6	
FLT PLN		
FIC	Edmonton 866-WXBRIEF (Toll free within Canada) or 866-541-4102 (Toll free within Canada & USA)	
ACC	Edmonton IFR 888-358-7526	
HELI DATA	FATO 86' dia non-supporting TLOF 57' dia CONC elevated Safety Area 115' dia 16,000 lbs Max heli overall length 57.4'	
LIGHTING	RY(LO)	
COMM		
RCO	Edmonton rdo 123.475 (FISE) 126.7 (bcst)	
ATIS	124.0	
TWR	Red Deer 118.5 (V) 13-05Z† (emerg only 403-886-4547)	
MF	tfc 118.5 05-13Z† 5NM centered on Red Deer Regional A/D 5.8NM S 6000 ASL (CAR 602.98)	
PAL	Edmonton Centre 132.85	
PRO	Arr/dep 300° to 010° fr heli, slope 8% (H3). Arr/dep 075° to 111° fr heli, slope 8% (H3).	
CAUTION	P-lines marked with orange/white balls SE heli 075°-111°. Office bldg NE heli marked with obst lgts.	

ALBERTA

AERODROME / FACILITY DIRECTORY

RED DEER / TRUANT SOUTH AB

CRD6

REF	N52 16 40 W113 54 55 3.9W 15°E (2012) UTC-7(6) Elev 3100' A5005 A5015	
OPR	Mike Truant 403-346-6143 Reg PPR	
FLT PLN	FIC Edmonton 866-WXBRIEF (Toll free within Canada) or 866-541-4102 (Toll free within Canada & USA)	
RWY DATA	Rwy 17(172°)/35(352°) 2141x50 turf	
RCR	Opr No win maint	
COMM	TWR Red Deer 118.5 (V) 13-05Z† (emerg only 403-886-4547) ATF tfc 118.5 2NM 6000 ASL excluding airspace within CYQF CZ	
PRO	Red Deer Common Frequency Area 122.875 outside of A/D ATF. See SECTION C PLANNING.	
CAUTION	Hwy 11 at N end treat as 50 AGL obst. Driveway mid field running E/W. P-lines 328' E/W of strip. Markers each side of rwy every 200'. A/D underlies arr/dep path for CYQF Rwy16/34 aprx 5.5NM S.	