



Flight Plan & Site Survey

Created using **RPAS Wilco**[®]

Operation Name:	Mission 01-25-2023
Pilot Name:	
Pilot Certificate:	
Flight Start:	January 25, 2023 11:55 AM
Flight End:	January 25, 2023 1:55 PM
Flight Area (Latitude):	49° 48' 17.40" N (49.805)
Flight Area (Longitude):	125° 9' 21.00" W (-125.156)
Altitude - Radius:	Alt: 600 ft - Rad: 926.0 m (0.5 nm)
Airspace:	UNCONTROLLED
FIR - Contact:	CZVR - 604-586-4500
Weather:	4.9 Celsius - Partially cloudy

Please ensure you received all required authorizations prior to flight.

Disclaimer

This Site Survey was created using RPAS Wilco by AIM Robotics. The flight plan contained is intended only for RPAS flights on the date/time and location specified. The user accepts all responsibility for the accuracy and completeness of the information contained.

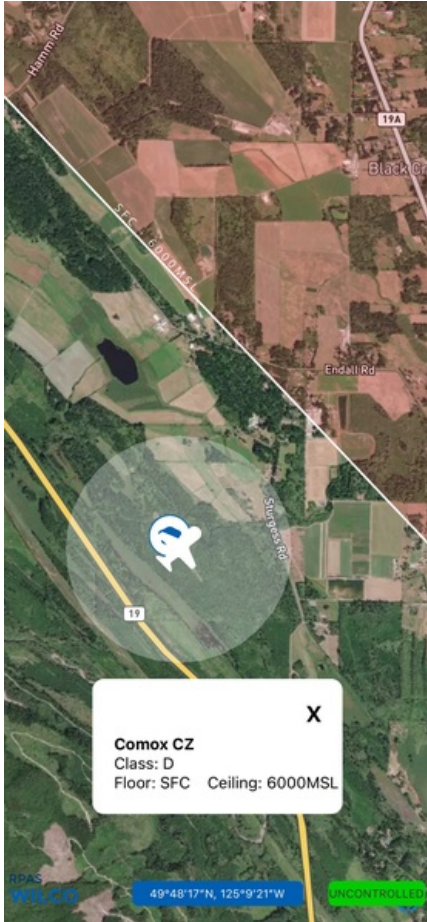
For the complete Terms & Conditions, see

<https://rpaswilco.com/#/tnc>



Included

- Site Survey
- Obstacles (if available)
- Nearby Aerodromes
- Canadian Aviation Regulations
- GFA
- Aerodrome Supplements
 - METAR & TAF (if available)
 - NOTAMS
 - CFS

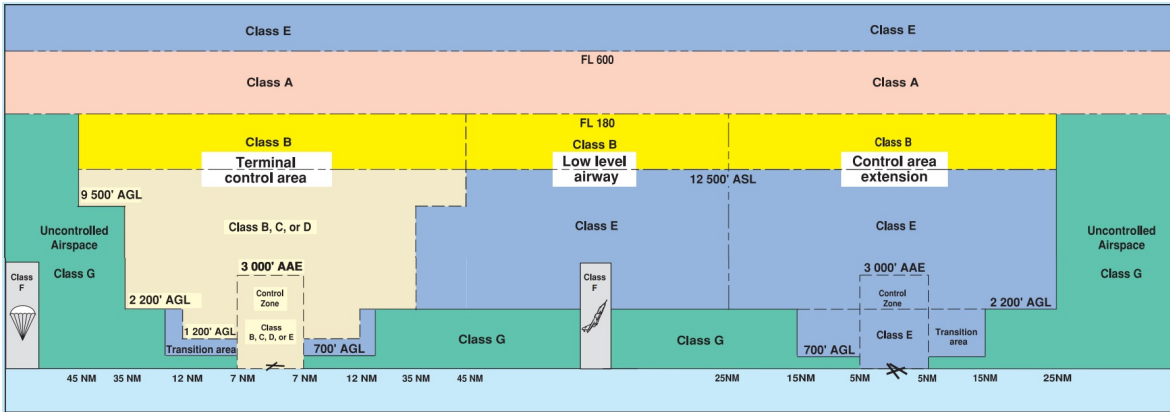
Flight Map



MAP Details

	Latitude	Longitude
 MODEL	49° 48' 17.40" N (49.805)	125° 9' 21.00" W (-125.156)
 Pilot Randall Hepner	49° 48' 21.00" N (49.8058)	125° 9' 24.60" W (-125.1568)

Airspace Classification



Overlying Airspaces

Class	Name	Floor	Ceiling
E	T645 Airway	2200AGL	12500MSL
B	T645 Airway	12500MSL	18000MSL
E	T719 Airway	2200AGL	12500MSL
B	T719 Airway	12500MSL	18000MSL
E	Comox, BC TCA	700AGL	12500MSL
B	Comox, BC TCA	12500MSL	FL230
E	Comox, BC TCA	700AGL	FL230

Nearest Aerodromes & Distance from Operation

COURTENAY (SMIT FIELD) (CCS6 - AERODROME - Reg)	Lat: 49.667	Long: -125.098	15.88 KM	8.57 NM
CAMPBELL RIVER (CYBL - AERODROME/HELIPORT - Cert)	Lat: 49.952	Long: -125.273	18.392 KM	9.93 NM
COURTENAY AIRPARK (CBG9 - WATERDROME - Reg)	Lat: 49.681	Long: -124.981	18.639 KM	10.06 NM
COURTENAY AIRPARK (CAH3 - AERODROME - Reg)	Lat: 49.679	Long: -124.982	18.757 KM	10.13 NM

Weather Information for Mission Day

Summary: Partly cloudy throughout the day.

Condition	Temperature	Feels Like	Precipitation	Visibility	Cloud Coverage	Wind Speed	Humidity
Partially cloudy	4.9 Celsius	4.0 Celsius	1.0 %	13.2 Km	75.2 %	8.6 kph	96.9 %

BRITISH COLUMBIA

AERODROME/FACILITY DIRECTORY

CAMPBELL RIVER BC (Cont'd)

CYBL

COMM

RADIO	Campbell rdo 122.0 (V) 1330-0530Z† (emerg only 250-923-3942)
RCO	Pacific rdo 123.55 (FISE) 126.7 (bcst)
ATIS	128.55 14-05Z†
MF	Campbell rdo 1330-0530Z† O/T tfc 122.0 5NM 3300 ASL excluding the area below 700' depicted on the Campbell River VTPC (CAR 602.98)
TML	Comox 123.7 227.6

NAV

NDB	YBL 203 (L) N50 00 23 W125 21 27
DME	IBL 109.1 Ch 28 N49 57 19 W125 16 49 (376')
ILS	IBL 109.1 (Rwy 12) RVR LOC reliable only within 10° either side of centreline.

PRO

Rgt hand circuits Rwy 12 (CAR 602.96)
 Reduced Visibility Operations Plan (RVOP)
 Rwy 12/30 & Twy A ops to vis less than ½sm and greater than or equal to ¼sm. One in, one out. Day use only.
 Twy B & C are not avbl to access rwy for use during reduced vis ops. All acft must use Twy A to access the rwy.

CAUTION

Deer in vic of rwy. Parachuting to 12,500 ASL on A/D. Model acft rwy & activity aprx 1.5NM NE thld Rwy 12.

CANADA WATER AERODROME SUPPLEMENT

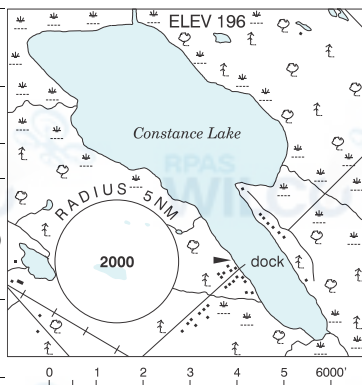
Effective 0901Z 24 March 2022 to 0901Z 20 April 2023

AERODROME/FACILITY DIRECTORY B37

CONSTANCE LAKE ON

CNQ5

REF	N45 24 10 W75 58 32 4NE 14°W UTC-5 (4) Elev 196' A1905 A5000 A5002
OPR	C. & S. Haddad 613-832-3695/2097 Reg Ltd hrs PN
PF	B-1,2,5 C-3,4,6
FLT PLN	FIG Québec 866-GOMÉTÉO or 866-WXBRIEF (Toll free within Canada) or 866-541-4105 (Toll free within Canada & USA)
SERVICES	Mon & Tue by appointment PN 100
FUEL	1,2,5
NAV	
VOR/DME	OTTAWA YOW 114.6 Ch 96 N45 26 30 W75 53 49 (450')
CAUTION	Carp ATF area 3NM SSW (122.8 5NM 3400 ASL).

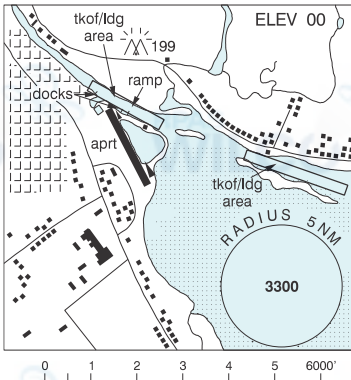


COOKING LAKE AB — See EDMONTON / COOKING LAKE

COURTENAY AIRPARK BC

CBG9

REF	N49 40 53 W124 58 53 17°E (2016) UTC-8(7) Elev 00' A5004
OPR	Courtenay Airpark Association 250-334-8545 Reg
PF	B-1,2 C-3,4,5,6
FLT PLN	FIG Kamloops 866-WXBRIEF (Toll free within Canada) or 866-541-4101 (Toll free within Canada & USA)
SERVICES	
FUEL	100LL Self-serve major credit cards 2,3,7
A/D DATA	Gravel bottom, tidal range 13'. River shallow at low tides.
COMM	
ATF	tfc 123.35 3NM 1500 ASL exc area within Comox CZ
PRO	Circuit N of ldg area. Circuit alt 800 ASL. Avoid built up areas. Right-hand circuit for westbound ldfs.
CAUTION	Hvy mil tfc in Comox mil CZ 1NM N. Adj land A/D. Bird sanctuary within A/D. Hvy seasonal bird activity.



CRANBROOK FSS - RCO

Abbotsford 119.4 (RAAS) 07-15Z± (N49 01 39 W122 22 28)

CANADA WATER AERODROME SUPPLEMENT

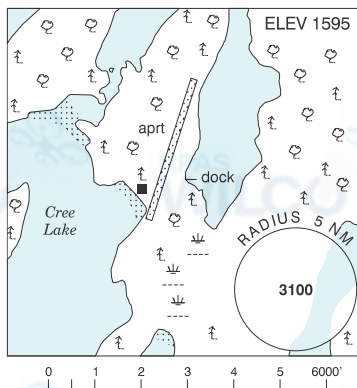
Effective 0901Z 24 March 2022 to 0901Z 20 April 2023

B38 AERODROME/FACILITY DIRECTORY

CREE LAKE (CRYSTAL LODGE) SK

CRE4

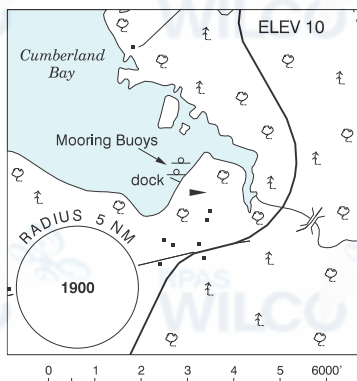
REF	N57 27 43 W106 44 46 11°E (2013) UTC-6 Elev 1595' A5023
OPR	Ron Olson 306-222-8339 Fax 306-374-4411 Reg
PF	B-1,2,5 PN Opr Jun 1-Sep 20
FLT PLN	
FIC	Edmonton 866-WXBRIEF (Toll free within Canada) or 866-541-4102 (Toll free within Canada & USA)
A/D DATA	Open water Jun 1-Sep 20
COMM	
ATF	UNICOM ltd hrs O/T tfc 122.8 5NM 4700 ASL



CUMBERLAND BAY NB

CCB7

REF	N46 00 21 W65 54 19 2WSW 18°W (2017) UTC-4(3) Elev 10' A5003
OPR	Brian Pinsent 506-383-1867 Reg PN
PF	C-1,2,5
FLT PLN	
FIC	London 866-WXBRIEF (Toll free within Canada) or 866-541-4104 (Toll free within Canada & USA)
ACC	(IFR only) Moncton 506-867-7177 or 866-480-8200
A/D DATA	Open water May-Oct. Depth 10-12'. Mud and rock bottom. Ramp and moorings.
COMM	
ATF	tfc 123.2 5NM 3100 ASL



DAVIS POND NL — See SPRINGDALE / DAVIS POND

DEEP BAY ON — See PARRY SOUND / DEEP BAY

DEER LAKE FSS-RCO

St. Anthony 122.3 (RAAS) (N51 23 31 W56 04 59)

BRITISH COLUMBIA

AERODROME / FACILITY DIRECTORY

COURTENAY AIRPARK BC

CAH3

REF	N49 40 46 W124 58 54 Adj E 17°E (2016) UTC-8(7) Elev 9' A5004	
OPR	Courtenay Airpark Association 250-334-8545 Reg	
PF	B-1,2 C-3,4,5,6	
CUST	AOE/CAN	
FLT PLN	FIC Kamloops 866-WXBRIEF (Toll free within Canada) or 866-541-4101 (Toll free within Canada & USA)	
SERVICES	FUEL 100LL (self-serve major credit cards) S 2,3,4,5	
RWY DATA	Rwy 13/31 1800x60 asphalt RCR Opr or 250-338-9814 16-01Z† No win maint	
COMM	ATF tfc 123.35 3NM 1500 ASL exc area within Comox land A/D CZ.	
PRO	Rgt hand circuits Rwy 31 (CAR 602.96). Circuit alt 800 ASL. Avoid built-up areas. See Comox VTPC & PRO. Touch and Go PPR.	
CAUTION	Heavy mil tfc in Comox mil CZ 1NM N. Bird sanctuary adj to rwy. Water aerodrome (COMOX CCX6) 2NM E. Water aerodrome (Courtenay Airpark CBG9) adjacent N	