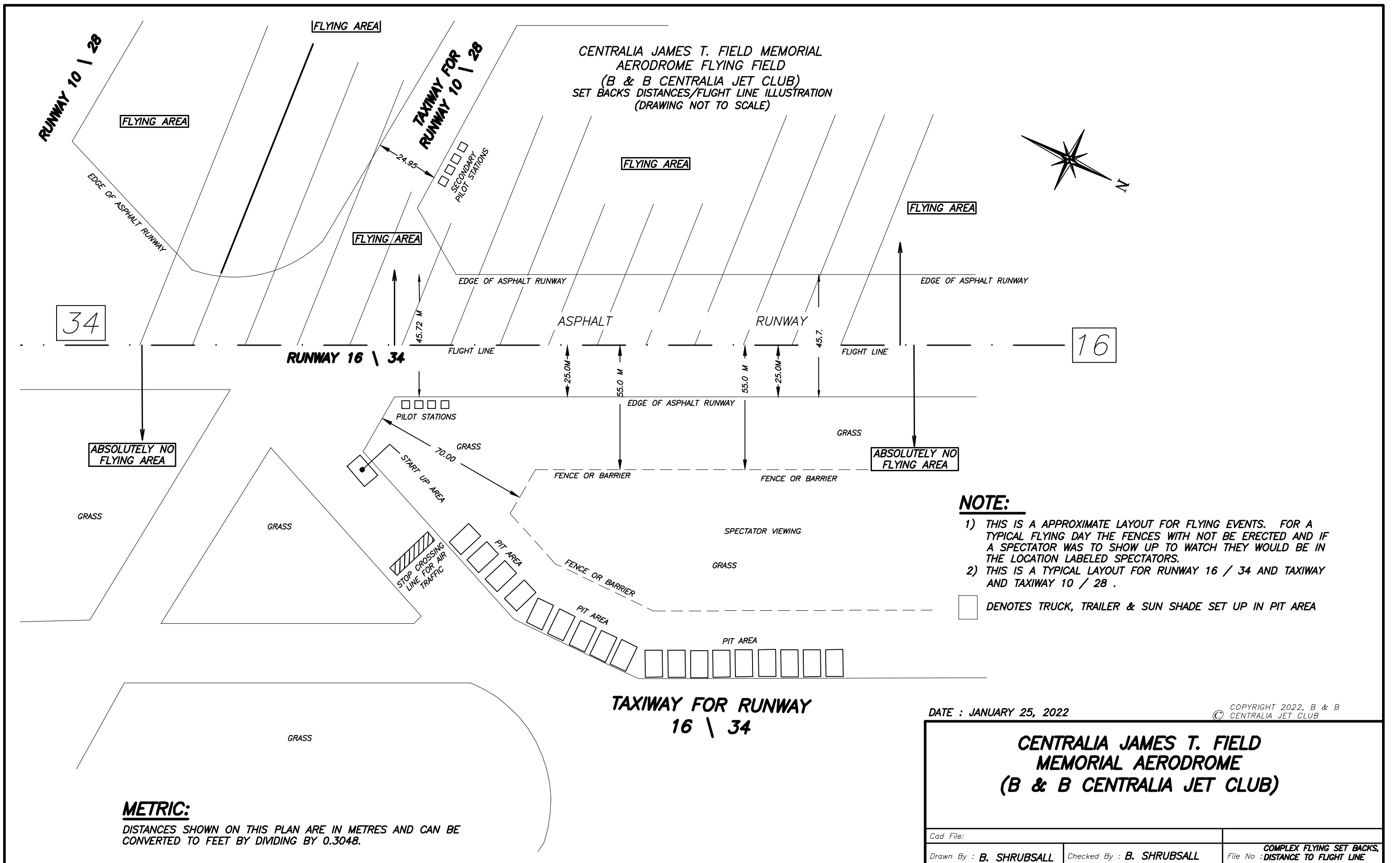
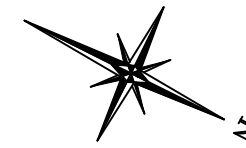


CENTRALIA JAMES T. FIELD MEMORIAL
AERODROME FLYING FIELD
(B & B CENTRALIA JET CLUB)
SET BACKS DISTANCES/FLIGHT LINE ILLUSTRATION
(DRAWING NOT TO SCALE)



NOTE:

- 1) THIS IS A APPROXIMATE LAYOUT FOR FLYING EVENTS. FOR A TYPICAL FLYING DAY THE FENCES WITH NOT BE ERECTED AND IF A SPECTATOR WAS TO SHOW UP TO WATCH THEY WOULD BE IN THE LOCATION LABELED SPECTATORS.
- 2) THIS IS A TYPICAL LAYOUT FOR RUNWAY 16 / 34 AND TAXIWAY AND TAXIWAY 10 / 28 .

□ DENOTES TRUCK, TRAILER & SUN SHADE SET UP IN PIT AREA

METRIC:

DISTANCES SHOWN ON THIS PLAN ARE IN METRES AND CAN BE CONVERTED TO FEET BY DIVIDING BY 0.3048.

DATE : JANUARY 25, 2022

COPYRIGHT 2022, B & B
CENTRALIA JET CLUB

**CENTRALIA JAMES T. FIELD
MEMORIAL AERODROME
(B & B CENTRALIA JET CLUB)**

Cad File:

Drawn By : B. SHRUBSALL

Checked By : B. SHRUBSALL

COMPLEX FLYING SET BACKS,
File No : DISTANCE TO FLIGHT LINE