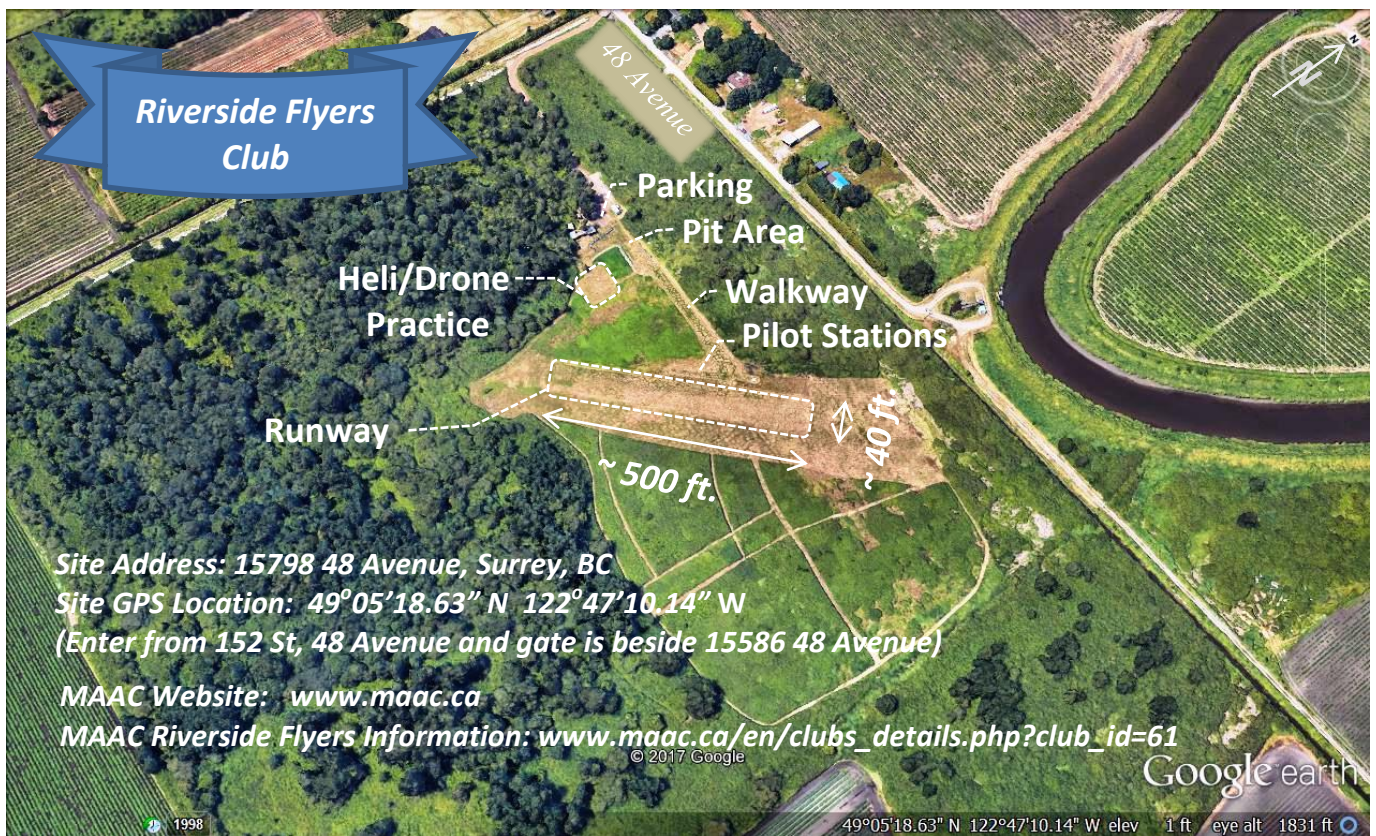


Riverside Flyers Club Site Information and Photos

The following information is intended to help people learn about the current site arrangements, conditions and flight at the Model Aeronautics Association of Canada (MAAC) Riverside Flyers club field. The main aspects of the site layout include photos and videos of the field arrangements, its current conditions as well as its field and flying procedures. Hopefully, this document can help people learn about the field flying, practice and preparation areas ... as well as the proximity of trees, bushes and conditions near the flight/practice area.

1. Site Overview

The following Google Earth image and information labels show an overview of the Riverside Flyers Club site:



2. Videos of Runway Appearance, Conditions, Adjacent Areas/Plants/Trees & Proximity

Unfortunately, these types of video cannot be stored in the MAAC website. The following video shows the runway area in a scan that reflects what a pilot might see from left to right at one of the four Flight Stations:



Riverside Runway - Pilot's Vision.wmv

The following video shows the open space between the runway and helicopter/drone practice and preparation Pits (table) areas:



Distant View of Heli - Drone & Preparation Areas.wmv

3. A Few Runway Photos

The following two photos show a pilot's Flight Station view to the left (north) and to the right (south). These images also show helpful tables adjacent to the Flight Stations:



The following picture is from the northwest corner of the runway, looking down the runway (to the South):



The following picture is from the northeast corner of the runway, looking down the runway (to the South):



The following photo shows the centre view of the runway (looking towards the south):



4. Pilot Flight Station & Flight Position

The following photo shows an operating pilot and the associated video shows the pilot's airplane taking off (the wingspan of this de Havilland Beaver plane is near approximately 2m or about 6.5 ft):



The following brief video shows an airplane take-off to the south end of the runway towards the trees on the south end of the runway. This direction of takeoff and landing is common during the summer but it sometimes changes to the opposite direction depending on wind direction in the winter:



Riverside Airplane Take-off (2017).wmv

5. Helicopter/Drone Practice Area

The following photo shows where flight of helicopters and drones (with or without FPV goggles) is practiced near the aircraft Pit preparation tables. This practice area also has a dedicated table behind the pilot.



6. Pit (Table) Area and Walkway to the Runway

The following image shows the Pit (table) area, where an individual will use a table for the duration of his/her day at the site. This area is located adjacent to the parking area:



The following image shows the walkway between the Pit table and runway areas:



7. Field Dimensions

Google Earth indicates that the clear landing/take-off runway dimensions may be approximately 60 ft wide x 570 ft long (19 m wide x 174 m long). Recent field measurement of the runway dimensions indicated that the current runway grass area dimensions are approximately 50 ft wide x 410 ft long (15 m wide x 125 m long).

Around the runway perimeter, generally adjacent weeds (<3 ft high) form an area about 9 ft (2.4 m) wide along the eastern and southern edges of the runway. Along the northern and western edges, they may be an area about 15 ft (4.6 m) wide (i.e. beyond the edge of the runway). Taller plants and trees in some of those areas seem to be about 40 ft (12 m) or more away from the eastern edge of the runway, about 140 ft (42.7 m) away from the northern edge of the runway and about 60 ft (18.3 m) away from the southern edge of the runway. Taller grasses and the operating pilots are adjacent to the western side of the runway.

The helicopter/drone practice area is approximately 50 ft wide x 60 ft long (15 m wide x 18 m long). Most of the helicopter and drone practice area is surrounded by tall grasses (sometimes approximately 4 ft tall in the summer, unless they're trimmed).

8. Types of Transmitters, Aircraft, Batteries/Fuels Permitted For Use

The Riverside Flyers club members and guests are required to be MAAC members who follow a published set of the Riverside Flyers Field & Flying Procedures (rules) ... that coordinate their activities, procedures, duties, devices, safety and needs. Items shown in the following table are permitted to be used at the club site, but in accordance with the club rules and interaction between present members.

<u>Transmitters</u>	<u>Batteries/Fuels</u>	<u>Aircraft</u>
72 MHz	Electric (NiCad, LiPo etc.)	Airplanes & Sailplanes
2.4 GHz	Gasoline & Glow etc.	Helicopters & Drones
Transmitter/Frequency Pins	Battery Chargers	FPV Goggles

If anybody would like to consider joining the Riverside Flyers club or if they have any questions/concerns, we would be happy to discuss them any time.