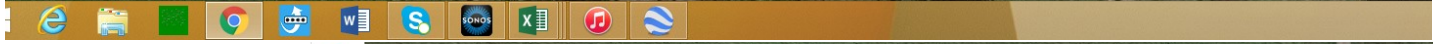
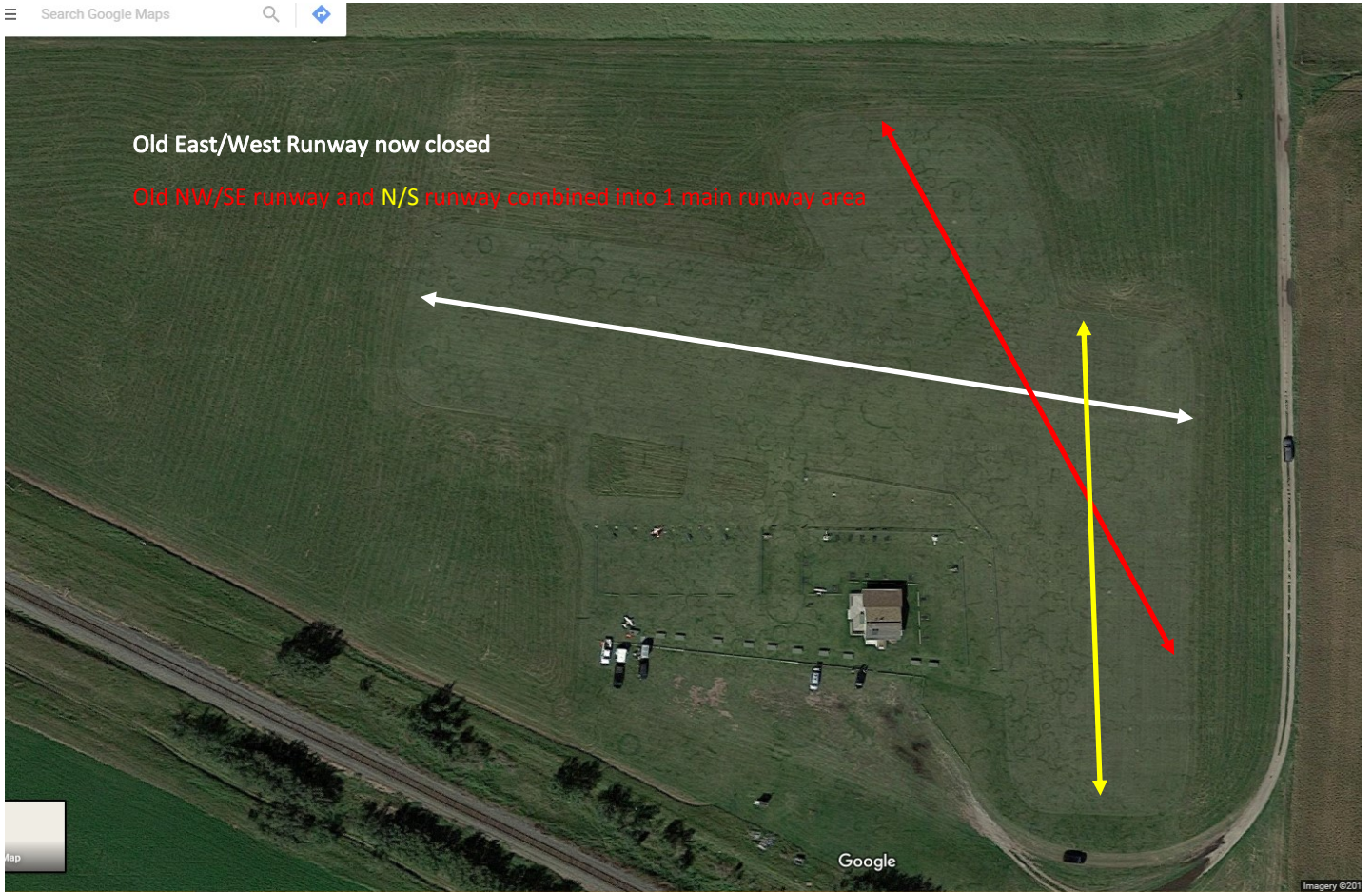


Old East/West Runway now closed

Old NW/SE runway and N/S runway combined into 1 main runway area



New Main NW/SE Runway 725 feet long

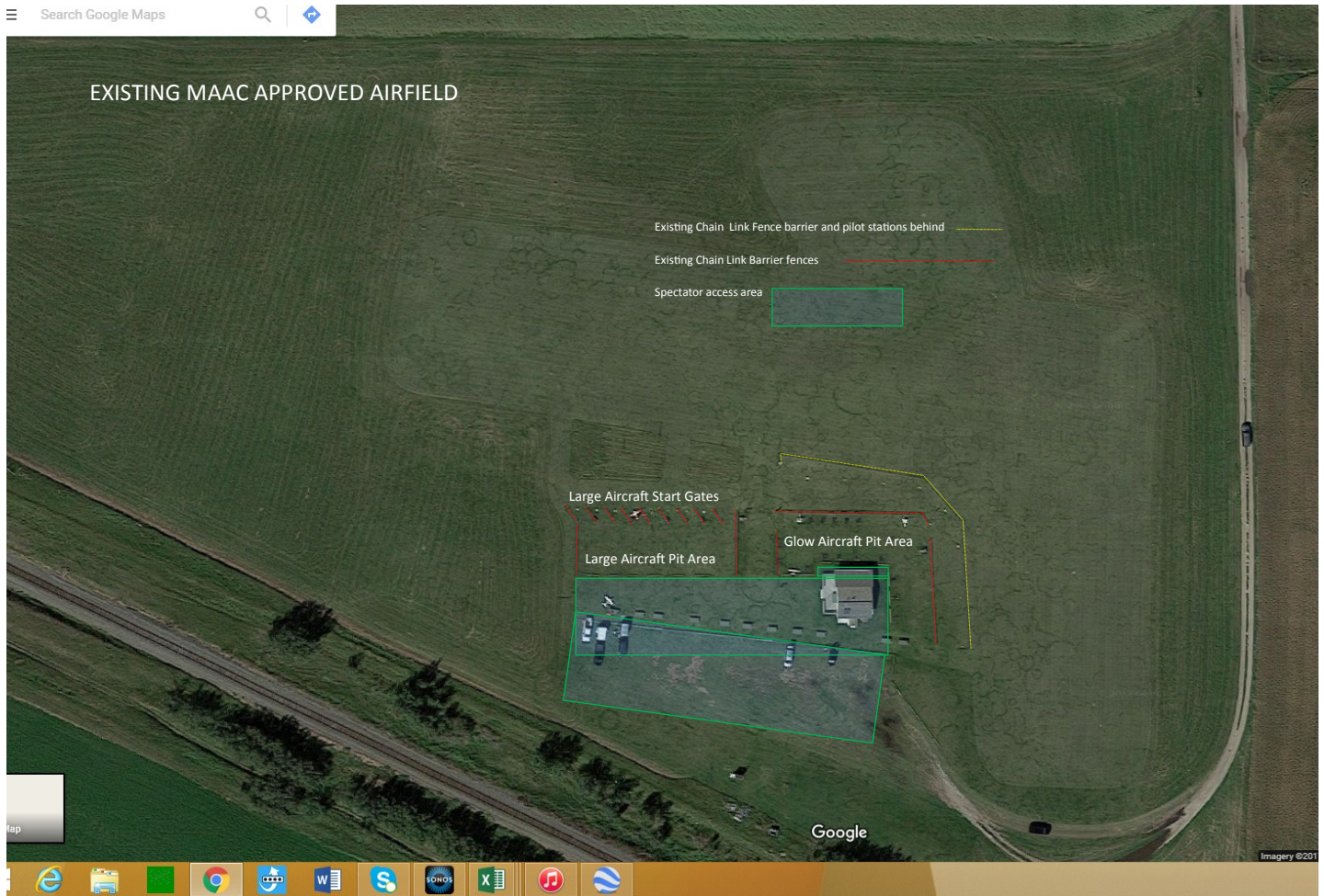


Lengthen existing N/S runway to 600 feet



Total area to be mowed and available for landing and roll out.





The main changes from the existing approved MAAC field layout are:

- 1 New barrier fence for the pilot stations on the new NW/SE runway
- 2 New barrier fence to protect pilots from taxiing aircraft from start gates, glow pits and arming areas

From the last figure on page 4 the current distances from flight line are:

New NW/SE runway

Flight Line to Nearest Spectator area (2 fences in pathway) 35M

Flight Line to pilot station (1 fence in pathway) 21 M

Flight Line to Nearest Pits (2 fences in pathway) 25 M

Existing N/S runway

Flight Line to Nearest Spectator area (2 fences in pathway) 40M

Flight Line to pilot station (1 fence in pathway) 21 M

Flight Line to Nearest Pits (2 fences in pathway) 29 M

NEW AIRFIELD LAYOUT

- NEW Chain Link Fence barrier and pilot stations behind
- NEW Pilot Stations
- Existing Pilot Stations
- Existing Chain Link Barrier fences
- Spectator access area

